

LVD TEST REPORT

On Behalf of

Product Name: INTELLIGENT PULSE REPAIR

Trademark: N/A

Model Number: XJB1210-2

Prepared For: Tianchang Jinjie Electronics Co., Ltd

Address: Union village Qinlan Town Tianchang City Anhui Provice

Prepared By: Shenzhen Huaxiang Testing Co , Ltd

Address: 1st Floor, Building A1, No. 2082 Jincheng Road, Shajing Street, Bao'an District, Shenzhen City, Guangdong Province, China

Report No.: HUAX250428082KR

TEST REPORT**EN IEC 62368-1****Audio/video, information and communication technology equipment****Part 1: Safety requirements****Report Number**.....: HUAX250428082KR

Date of issue.....: Apr. 28, 2025

Applicant's name.....: Tianchang Jinjie Electronics Co., Ltd

Address.....: Union village Qinlan Town Tianchang City Anhui Province

Test specification:

Standard.....: EN IEC 62368-1:2024+A11:2024

Test procedure.....: test report

Non-standard test method.....: N/A

Test Report Form No.....: IEC60950_1G

Test Report Form(s) Originator.....: SGS Fimko Ltd

Master TRF.....: Dated 2019-07-02

Copyright © 2019 IEC System of Conformity Assessment Schemes for Electrotechnical Equipment and Components (IECEE System). All rights reserved.

This publication may be reproduced in whole or in part for non-commercial purposes as long as the IECEE is acknowledged as copyright owner and source of the material. IECEE takes no responsibility for and will not assume liability for damages resulting from the reader's interpretation of the reproduced material due to its placement and context.

If this Test Report Form is used by non-IECEE members, the IECEE/IEC logo and the reference to the CB Scheme procedure shall be removed.

This report is not valid as a CB Test Report unless signed by an approved CB Testing Laboratory and appended to a CB Test Certificate issued by an NCB in accordance with IECEE 02.

General disclaimer:

The test results presented in this report relate only to the object tested.

Test Item description: INTELLIGENT PULSE REPAIR

Trade Mark: N/A

Manufacturer.....: Tianchang Jinjie Electronics Co., Ltd

Manufacturer Address.....: Union village Qinlan Town Tianchang City Anhui Province

Model/Type reference: XJB1210-2

Ratings: Input Voltage:AC110-240V, 50-60Hz
Output Voltage:12V-15.5V
Output Current:DC 10A(4-180Ah)

Testing procedure and testing location

Laboratory name..... : Shenzhen Huaxiang Testing Co , Ltd

Testing location/address: : 1st Floor, Building A1, No. 2082 Jincheng Road, Shajing Street, Bao'an District, Shenzhen City, Guangdong Province, China

Testing procedure : TL ☒ RMT ☐ SMT ☐ WMT ☐ TMP ☐

Prepared by
(Engineer)

Joan Wang

Joan Wang

Reviewed By
(Supervisor)

: Amy Jiang

Amy Jiang

List of Attachments (including a total number of pages in each attachment):

- Appendix 1: For requirements of European group differences. (9 pages)
- Appendix 2: Photo attachments. (6 pages)

Summary of testing:
Tests performed (name of test and test clause):

All clauses.

Testing location:

Shenzhen Huaxiang Testing Co , Ltd
1st Floor, Building A1, No. 2082 Jincheng Road, Shajing Street, Bao'an District, Shenzhen City, Guangdong Province, China

Summary of compliance with National Differences:

European group differences.

☒ **The product fulfils the requirements of** EN IEC 62368-1:2024+A11:2024

Copy of marking plate:

The artwork below may be only a draft.

INTELLIGENT PULSE REPAIR

Model: XJB1210-2

Rating(s): Input Voltage: AC110-240V, 50-60Hz

Output Voltage: 12V-15.5V

Output Current: DC 10A(4-180Ah)



Tianchang Jinjie Electronics Co., Ltd

Union village Qinlan Town Tianchang City Anhui Province

Made in China

TEST ITEM PARTICULARS:	
Classification of use by.....:	<input checked="" type="checkbox"/> Ordinary person <input checked="" type="checkbox"/> Instructed person <input checked="" type="checkbox"/> Skilled person <input checked="" type="checkbox"/> Children likely to be present
Supply Connection.....:	<input checked="" type="checkbox"/> AC Mains <input type="checkbox"/> DC Mains <input type="checkbox"/> External Circuit - not Mains connected - <input type="checkbox"/> ES1 <input type="checkbox"/> ES2 <input checked="" type="checkbox"/> ES3
Supply % Tolerance	<input checked="" type="checkbox"/> +10%/-10% <input type="checkbox"/> +20%/-15% <input type="checkbox"/> + ____ %/ - ____ % <input type="checkbox"/> None
Supply Connection – Type	<input checked="" type="checkbox"/> pluggable equipment type A - <input type="checkbox"/> non-detachable supply cord <input type="checkbox"/> appliance coupler <input checked="" type="checkbox"/> direct plug-in <input type="checkbox"/> mating connector <input type="checkbox"/> pluggable equipment type B - <input type="checkbox"/> non-detachable supply cord <input type="checkbox"/> appliance coupler <input type="checkbox"/> permanent connection <input type="checkbox"/> mating connector <input type="checkbox"/> other: _____
Considered current rating of protective device as part of building or equipment installation.....:	<u>6</u> A; Installation location: <input checked="" type="checkbox"/> building; <input type="checkbox"/> equipment
Equipment mobility.....:	<input type="checkbox"/> movable <input type="checkbox"/> hand-held <input type="checkbox"/> transportable <input type="checkbox"/> stationary <input type="checkbox"/> for building-in <input checked="" type="checkbox"/> direct plug-in <input type="checkbox"/> rack-mounting <input type="checkbox"/> wall-mounted
Over voltage category (OVC)	<input type="checkbox"/> OVC I <input type="checkbox"/> OVC IV <input type="checkbox"/> other: _____
Class of equipment	<input type="checkbox"/> Class I
Access location	<input type="checkbox"/> restricted access location
Pollution degree (PD)	<input type="checkbox"/> PD 1
Manufacturer's specified maximum operating ambient:	<u>25</u> °C
IP protection class	<input checked="" type="checkbox"/> IPX0 <input type="checkbox"/> IP ____
Power Systems	<input checked="" type="checkbox"/> TN
Altitude during operation (m)	<input checked="" type="checkbox"/> 2000 m or less <input type="checkbox"/> _____ m
Altitude of test laboratory (m)	<input checked="" type="checkbox"/> 2000 m or less <input type="checkbox"/> _____ m
Mass of equipment (kg)	<input checked="" type="checkbox"/> <u>0.6</u> kg

Possible test case verdicts:	
- test case does not apply to the test object..... :	N/A
- test object does meet the requirement..... :	P (Pass)
- test object does not meet the requirement..... :	F (Fail)
Testing..... :	
Date of receipt of test item..... :	Apr. 24, 2025
Date (s) of performance of tests..... :	Apr. 24, 2025 - Apr. 28, 2025
GENERAL REMARKS:	
<p>"(See Enclosure #)" refers to additional information appended to the report. "(See appended table)" refers to a table appended to the report.</p> <p>Throughout this report a <input type="checkbox"/> comma / <input checked="" type="checkbox"/> point is used as the decimal separator.</p> <p>The related applicable OSM decisions have been considered and the requirements found fulfilled</p> <p>Determination of the test result includes consideration of measurement uncertainty from the test equipment and methods.</p>	
Manufacturer's Declaration per sub-clause 4.2.5 of IEC60068-2-1:	
The application for obtaining a CB Test Certificate includes more than one factory location and a declaration from the Manufacturer stating that the sample(s) submitted for evaluation is (are) representative of the products from each factory has been provided..... :	<input type="checkbox"/> Yes <input checked="" type="checkbox"/> Not applicable
When differences exist; they shall be identified in the General product information section.	
Name and address of factory (ies)..... :	Same as manufacturer
GENERAL PRODUCT INFORMATION:	
Product Description –	
The products are Power INTELLIGENT PULSE REPAIR to be in indoor use only, electronic components mounted on PWB, External enclosure is plastic material, the plastic material of min.V-1 grade.	
Model Differences –	
N/A	
Additional application considerations – (Considerations used to test a component or sub-assembly) –	
N/A	

ENERGY SOURCE IDENTIFICATION AND CLASSIFICATION TABLE:	
<p>(Note 1: Identify the following six (6) energy source forms based on the origin of the energy.)</p> <p>(Note 2: The identified classification e.g., ES2, TS1, should be with respect to its ability to cause pain or injury on the body or its ability to ignite a combustible material. Any energy source can be declared Class 3 as a worse case classification e.g. PS3, ES3.)</p>	
Electrically-caused injury (Clause 5): (Note: Identify type of source, list sub-assembly or circuit designation and corresponding energy source classification) Example: +5 V dc input ES1	
Source of electrical energy	Corresponding classification (ES)
Input terminal	ES3
Internal circuit	ES3
Output terminal	ES1
Electrically-caused fire (Clause 6): (Note: List sub-assembly or circuit designation and corresponding energy source classification) Example: Battery pack (maximum 85 watts): PS2	
Source of power or PIS	Corresponding classification (PS)
Input terminal	PS3
Internal circuit	PS3
Output terminal	PS1
Injury caused by hazardous substances (Clause 7) (Note: Specify hazardous chemicals, whether produces ozone or other chemical construction not addressed as part of the component evaluation.) Example: Liquid in filled component Glycol	
Source of hazardous substances	Corresponding chemical
N/A	N/A
Mechanically-caused injury (Clause 8) (Note: List moving part(s), fan, special installations, etc. & corresponding MS classification based on Table 35.) Example: Wall mount unit MS2	
Source of kinetic/mechanical energy	Corresponding classification (MS)
Sharp edges and Corners	MS1
Equipment mass (<7kg)	MS1
Thermal burn injury (Clause 9) (Note: Identify the surface or support, and corresponding energy source classification based on type of part, location, operating temperature and contact time in Table 38.) Example: Hand-held scanner – thermoplastic enclosure TS1	
Source of thermal energy	Corresponding classification (TS)
External enclosure	TS1

ENERGY SOURCE IDENTIFICATION AND CLASSIFICATION TABLE:	
Radiation (Clause 10) (Note: List the types of radiation present in the product and the corresponding energy source classification.) Example: DVD – Class 1 Laser Product RS1	
Type of radiation	Corresponding classification (RS)
N/A	N/A

ENERGY SOURCE DIAGRAM
Indicate which energy sources are included in the energy source diagram. Insert diagram below
<div style="text-align: center;"> <input checked="" type="checkbox"/> ES <input checked="" type="checkbox"/> PS <input checked="" type="checkbox"/> MS <input checked="" type="checkbox"/> TS <input type="checkbox"/> RS </div>

OVERVIEW OF EMPLOYED SAFEGUARDS				
Clause	Possible Hazard			
5.1	Electrically-caused injury			
Body Part (e.g. Ordinary)	Energy Source (ES3: Primary Filter circuit)	Safeguards		
		Basic	Supplementary	Reinforced (Enclosure)
Ordinary; Instructed	ES3: Input terminal	N/A	N/A	Enclosure
Ordinary; Instructed; Skilled	ES1: Output terminal	N/A	N/A	N/A
Ordinary; Instructed	ES3: Internal circuits	N	S	R
6.1	Electrically-caused fire			
Material part (e.g. mouse enclosure)	Energy Source (PS2: 100 Watt circuit)	Safeguards		
		Basic	Supplementary	Reinforced
All combustible materials within equipment	PS3: All internal circuits	N	S	N/A
Enclosure	PS1: Output terminals	N/A	N/A	N/A
7.1	Injury caused by hazardous substances			
Body Part (e.g., skilled)	Energy Source (hazardous material)	Safeguards		
		Basic	Supplementary	Reinforced
N/A	N/A	N/A	N/A	N/A
8.1	Mechanically-caused injury			
Body Part (e.g. Ordinary)	Energy Source (MS3:High Pressure Lamp)	Safeguards		
		Basic	Supplementary	Reinforced (Enclosure)
Ordinary; Instructed; Skilled	MS1: sharp edges and corners	N/A	N/A	N/A
9.1	Thermal Burn			
Body Part (e.g., Ordinary)	Energy Source (TS2)	Safeguards		
		Basic	Supplementary	Reinforced
Ordinary person	TS1: External enclosure	N/A	N/A	N/A
10.1	Radiation			
Body Part (e.g., Ordinary)	Energy Source (Output from audio port)	Safeguards		
		Basic	Supplementary	Reinforced
N/A	N/A	N/A	N/A	N/A
Supplementary Information:				
(1) See attached energy source diagram for additional details.				
(2) "N" – Normal Condition; "A" – Abnormal Condition; "S" Single Fault				

EN IEC 62368-1			
Clause	Requirement	Remark	Result
4	GENERAL REQUIREMENTS		P
4.1.1	Acceptance of materials, components and subassemblies	Components which are certified to IEC and/or national standards are used correctly within their ratings. Components not covered by IEC standards are tested under the conditions present in the equipment.	P
4.1.2	Use of components	See table 4.1.2	P
4.1.3	Equipment design and construction	No accessible part which could cause injury	P
4.1.15	Markings and instructions.....:	(See Annex F)	P
4.4.4	Safeguard robustness	See below	P
4.4.4.2	Steady force tests.....:	(See Annex T.4)	P
4.4.4.3	Drop tests.....:	(See Annex T.7)	P
4.4.4.4	Impact tests.....:	(See Annex T.6)	N/A
4.4.4.5	Internal accessible safeguard enclosure and barrier tests.....:		P
4.4.4.6	Glass Impact tests.....:		N/A
4.4.4.7	Thermoplastic material tests.....:	(See Annex T.8)	P
4.4.4.8	Air comprising a safeguard.....:	(See Annex T)	P
4.4.4.9	Accessibility and safeguard effectiveness	After test, all safeguard remains effective, No damaged	P
4.5	Explosion	No explosion	P
4.6	Fixing of conductors		P
4.6.1	Fix conductors not to defeat a safeguard	All conductive parts are fixed on PCB by at least two soldering points; The primary and secondary lead wire were soldered to PCB and fixed by glue.	P
4.6.2	10 N force test applied to	Applied 10 N force, no loosen	P
4.7	Equipment for direct insertion into mains socket - outlets		P
4.7.2	Mains plug part complies with the relevant standard.....:	See below	P
4.7.3	Torque (Nm).....:	<0.25Nm	P
4.8	Products containing coin/button cell batteries	No lithium coin/button cell battery	N/A
4.8.2	Instructional safeguard		N/A
4.8.3	Battery Compartment Construction		N/A
	Means to reduce the possibility of children		—

EN IEC 62368-1			
Clause	Requirement	Remark	Result
	removing the battery.....:		
4.8.4	Battery Compartment Mechanical Tests.....:	(See Table 4.8.4)	N/A
4.8.5	Battery Accessibility		N/A
4.9	Likelihood of fire or shock due to entry of conductive object.....:	(See Annex P)	N/A

5	ELECTRICALLY-CAUSED INJURY		P
5.2.1	Electrical energy source classifications.....:	(See appended table 5.2)	P
5.2.2	ES1, ES2 and ES3 limits		P
5.2.2.2	Steady-state voltage and current.....:	(See appended table 5.2)	P
5.2.2.3	Capacitance limits.....:	(See appended table 5.2)	P
5.2.2.4	Single pulse limits.....:	No such single pulses with the EUT	N/A
5.2.2.5	Limits for repetitive pulses.....:	No such repetitive pulses with the EUT	N/A
5.2.2.6	Ringing signals	No such ringing signals with the EUT	N/A
5.2.2.7	Audio signals	No such audio signals with the EUT	N/A
5.3	Protection against electrical energy sources		P
5.3.1	General Requirements for accessible parts to ordinary, instructed and skilled persons	See below.	P
5.3.2.1	Accessibility to electrical energy sources and safeguards		P
5.3.2.2	Contact requirements		P
	a) Test with test probe from Annex V.....:	The probe could not insert into the equipment as there is no ventilation on the product.	P
	b) Electric strength test potential (V).....:	The probe could not insert into the equipment as there is no ventilation on the product.	N/A
	c) Air gap (mm)	The probe could not insert into the equipment as there is no ventilation on the product.	N/A
5.3.2.4	Terminals for connecting stripped wire	No such terminals intended to be used by ordinary person.	N/A
5.4	Insulation materials and requirements		P
5.4.1.2	Properties of insulating material	The choice and application have taken into account as specified in this Clause 5 and Annex T except natural rubber, hygroscopic materials or asbestos are not used as insulation.	P
5.4.1.3	Humidity conditioning.....:	(See sub-clause 5.4.8)	P

EN IEC 62368-1			
Clause	Requirement	Remark	Result
5.4.1.4	Maximum operating temperature for insulating materials	(See appended table 5.4.1.4)	P
5.4.1.5	Pollution degree.....	Pollution degree 2	—
5.4.1.5.2	Test for pollution degree 1 environment and for an insulating compound	Pollution degree 2	N/A
5.4.1.5.3	Thermal cycling	Pollution degree 2	N/A
5.4.1.6	Insulation in transformers with varying dimensions		N/A
5.4.1.7	Insulation in circuits generating starting pulses		P
5.4.1.8	Determination of working voltage		P
5.4.1.9	Insulating surfaces	Considered.	P
5.4.1.10	Thermoplastic parts on which conductive metallic parts are directly mounted	See below	P
5.4.1.10.2	Vicat softening temperature.....	(See appended table 5.4.1.10.2)	N/A
5.4.1.10.3	Ball pressure	(See appended table 5.4.1.10.3)	P
5.4.2	Clearances		P
5.4.2.2	Determining clearance using peak working voltage	(See appended table 5.4.2.2)	P
5.4.2.3	Determining clearance using required withstand voltage	(See appended table 5.4.2.3)	P
	a) a.c. mains transient voltage.....	2.5kV	—
	b) d.c. mains transient voltage		—
	c) external circuit transient voltage.....		—
	d) transient voltage determined by measurement		—
5.4.2.4	Determining the adequacy of a clearance using an electric strength test	(See appended table 5.4.2.4)	N/A
5.4.2.5	Multiplication factors for clearances and test voltages.....		N/A
5.4.3	Creepage distances.....	(See appended table 5.4.3)	P
5.4.3.1	General		P
5.4.3.3	Material Group	IIIb	—
5.4.4	Solid insulation		P
5.4.4.2	Minimum distance through insulation	(See appended table 5.4.4.2)	P
5.4.4.3	Insulation compound forming solid insulation		P
5.4.4.4	Solid insulation in semiconductor devices		P
5.4.4.5	Cemented joints		P
5.4.4.6	Thin sheet material		P
5.4.4.6.1	General requirements		P
5.4.4.6.2	Separable thin sheet material		P

EN IEC 62368-1			
Clause	Requirement	Remark	Result
	Number of layers (pcs)	Three layers of insulation tape used as reinforced insulation, any combination of two layers pass the electric strength test.	P
5.4.4.6.3	Non-separable thin sheet material		N/A
5.4.4.6.4	Standard test procedure for non-separable thin sheet material.....	(See appended Table 5.4.9)	N/A
5.4.4.6.5	Mandrel test		N/A
5.4.4.7	Solid insulation in wound components		P
5.4.4.9	Solid insulation at frequencies >30 kHz.....	(See appended Table 5.4.4.9)	N/A
5.4.5	Antenna terminal insulation		N/A
5.4.5.1	General		N/A
5.4.5.2	Voltage surge test		N/A
	Insulation resistance (MΩ).....		—
5.4.6	Insulation of internal wire as part of supplementary safeguard.....	(See appended table 5.4.4.2)	N/A
5.4.7	Tests for semiconductor components and for cemented joints		N/A
5.4.8	Humidity conditioning		P
	Relative humidity (%).....	93	—
	Temperature (°C)	28	—
	Duration (h)	48	—
5.4.9	Electric strength test.....	(See appended table 5.4.9)	P
5.4.9.1	Test procedure for a solid insulation type test		P
5.4.9.2	Test procedure for routine tests		N/A
5.4.10	Protection against transient voltages between external circuit		N/A
5.4.10.1	Parts and circuits separated from external circuits	(See appended table 5.4.9)	N/A
5.4.10.2	Test methods		N/A
5.4.10.2.1	General		N/A
5.4.10.2.2	Impulse test.....	(See appended table 5.4.9)	N/A
5.4.10.2.3	Steady-state test.....	(See appended table 5.4.9)	N/A
5.4.11	Insulation between external circuits and earthed circuitry.....	(See appended table 5.4.9)	N/A
5.4.11.1	Exceptions to separation between external circuits and earth		N/A
5.4.11.2	Requirements		N/A
	Rated operating voltage U_{op} (V).....		—
	Nominal voltage U_{peak} (V).....		—

EN IEC 62368-1			
Clause	Requirement	Remark	Result
	Max increase due to variation U_{sp}		—
	Max increase due to ageing ΔU_{sa}		—
	$U_{op} = U_{peak} + \Delta U_{sp} + \Delta U_{sa}$		—
5.5	Components as safeguards		
5.5.1	General		P
5.5.2	Capacitors and RC units		N/A
5.5.2.1	General requirement		N/A
5.5.2.2	Safeguards against capacitor discharge after disconnection of a connector	(See appended table 5.5.2.2)	N/A
5.5.3	Transformers		P
5.5.4	Optocouplers	(See sub-clause 5.4 or Annex G.12)	P
5.5.5	Relays	(See Annex G.2)	N/A
5.5.6	Resistors	(See Annex G.10)	N/A
5.5.7	SPD's	(See Annex G.8)	N/A
5.5.7.1	Use of an SPD connected to reliable earthing		N/A
5.5.7.2	Use of an SPD between mains and protective earth		N/A
5.5.8	Insulation between the mains and external circuit consisting of a coaxial cable	(See Annex G.10.3)	N/A
5.6	Protective conductor		
5.6.2	Requirement for protective conductors		N/A
5.6.2.1	General requirements		N/A
5.6.2.2	Colour of insulation		N/A
5.6.3	Requirement for protective earthing conductors		N/A
	Protective earthing conductor size (mm ²)		—
5.6.4	Requirement for protective bonding conductors		N/A
5.6.4.1	Protective bonding conductors		N/A
	Protective bonding conductor size (mm ²)		—
	Protective current rating (A)		—
5.6.4.3	Current limiting and overcurrent protective devices		N/A
5.6.5	Terminals for protective conductors		N/A
5.6.5.1	Requirement		N/A
	Conductor size (mm ²), nominal thread diameter (mm)		N/A
5.6.5.2	Corrosion		N/A
5.6.6	Resistance of the protective system		N/A
5.6.6.1	Requirements		N/A

EN IEC 62368-1			
Clause	Requirement	Remark	Result
5.6.6.2	Test Method Resistance (Ω).....:		N/A
5.6.7	Reliable earthing		N/A
5.7	Prospective touch voltage, touch current and protective conductor current		N/A
5.7.2	Measuring devices and networks	Figure 4 of IEC 60990 was used in determining of the limit of ES1.	N/A
5.7.2.1	Measurement of touch current.....:	(See appended table 5.7.4)	N/A
5.7.2.2	Measurement of prospective touch voltage		N/A
5.7.3	Equipment set-up, supply connections and earth connections		N/A
	System of interconnected equipment (separate connections/single connection).....:		—
	Multiple connections to mains (one connection at a time/simultaneous connections).....:		—
5.7.4	Earthed conductive accessible parts.....:	(See appended Table 5.7.4)	N/A
5.7.5	Protective conductor current		N/A
	Supply Voltage (V).....:		—
	Measured current (mA).....:		—
	Instructional Safeguard.....:	(See F.4 and F.5)	N/A
5.7.6	Prospective touch voltage and touch current due to external circuits		N/A
5.7.6.1	Touch current from coaxial cables		N/A
5.7.6.2	Prospective touch voltage and touch current from external circuits		N/A
5.7.7	Summation of touch currents from external circuits		N/A
	a) Equipment with earthed external circuits Measured current (mA).....:		N/A
	b) Equipment whose external circuits are not referenced to earth. Measured current (mA).....:		N/A

6	ELECTRICALLY- CAUSED FIRE		P
6.2	Classification of power sources (PS) and potential ignition sources (PIS)		P
6.2.2	Power source circuit classifications	PS (power source) classification determined by measuring the maximum power in Figures 34 and 35 for load and power source circuits.	P
6.2.2.1	General		P
6.2.2.2	Power measurement for worst-case load fault....:	(See appended table 6.2.2)	P
6.2.2.3	Power measurement for worst-case power source fault.....:	(See appended table 6.2.2)	P

EN IEC 62368-1			
Clause	Requirement	Remark	Result
6.2.2.4	PS1	(See appended table 6.2.2)	P
6.2.2.5	PS2	(See appended table 6.2.2)	N/A
6.2.2.6	PS3	(See appended table 6.2.2)	P
6.2.3	Classification of potential ignition sources		P
6.2.3.1	Arcing PIS	(See appended table 6.2.3.1)	P
6.2.3.2	Resistive PIS	(See appended table 6.2.3.2)	P
6.3	Safeguards against fire under normal operating and abnormal operating conditions		P
6.3.1 (a)	No ignition and attainable temperature value less than 90 % defined by ISO 871 or less than 300 °C for unknown materials.....	(See appended table 5.4.1.5, 6.3.2, 9.0, B.2.6)	P
6.3.1 (b)	Combustible materials outside fire enclosure	No such materials used.	N/A
6.4	Safeguards against fire under single fault conditions		P
6.4.1	Safeguard Method	Approved fire enclosure used	P
6.4.2	Reduction of the likelihood of ignition under single fault conditions in PS1 circuits		P
6.4.3	Reduction of the likelihood of ignition under single fault conditions in PS2 and PS3 circuits		P
6.4.3.1	General		P
6.4.3.2	Supplementary Safeguards	By equipped plastic fire enclosure.	P
	Special conditions if conductors on printed boards are opened or peeled	No such case happened.	N/A
6.4.3.3	Single Fault Conditions.....	(See appended table 6.4.3)	P
	Special conditions for temperature limited by fuse		N/A
6.4.4	Control of fire spread in PS1 circuits		P
6.4.5	Control of fire spread in PS2 circuits		N/A
6.4.5.2	Supplementary safeguards		N/A
6.4.6	Control of fire spread in PS3 circuit		P
6.4.7	Separation of combustible materials from a PIS		N/A
6.4.7.1	General.....	(See tables 6.2.3.1 and 6.2.3.2)	N/A
6.4.7.2	Separation by distance		N/A
6.4.7.3	Separation by a fire barrier		N/A
6.4.8	Fire enclosures and fire barriers		P
6.4.8.1	Fire enclosure and fire barrier material properties		P
6.4.8.2.1	Requirements for a fire barrier		N/A
6.4.8.2.2	Requirements for a fire enclosure		P
6.4.8.3	Constructional requirements for a fire enclosure and a fire barrier		N/A
6.4.8.3.1	Fire enclosure and fire barrier openings	No opening	N/A

EN IEC 62368-1			
Clause	Requirement	Remark	Result
6.4.8.3.2	Fire barrier dimensions		N/A
6.4.8.3.3	Top Openings in Fire Enclosure: dimensions (mm)	No opening	N/A
	Needle Flame test		N/A
6.4.8.3.4	Bottom Openings in Fire Enclosure, condition met a), b) and/or c) dimensions (mm)		N/A
	Flammability tests for the bottom of a fire enclosure		N/A
6.4.8.3.5	Integrity of the fire enclosure, condition met: a), b) or c).....		N/A
6.4.8.4	Separation of PIS from fire enclosure and fire barrier distance (mm) or flammability rating.....	V-0 enclosure used	P
6.5	Internal and external wiring		N/A
6.5.1	Requirements		N/A
6.5.2	Cross-sectional area (mm ²)		—
6.5.3	Requirements for interconnection to building wiring.....	(See Annex Q.)	N/A
6.6	Safeguards against fire due to connection to additional equipment	(See Annex Q.)	P
	External port limited to PS2 or complies with Clause Q.1		P
7	INJURY CAUSED BY HAZARDOUS SUBSTANCES		N/A
7.2	Reduction of exposure to hazardous substances	No hazardous chemicals within the equipment.	N/A
7.3	Ozone exposure		N/A
7.4	Use of personal safeguards (PPE)		N/A
	Personal safeguards and instructions.....		—
7.5	Use of instructional safeguards and instructions		N/A
	Instructional safeguard (ISO 7010).....		—
7.6	Batteries.....	(See Annex M)	N/A
8	MECHANICALLY-CAUSED INJURY		P
8.1	General	See the following details.	P
8.2	Mechanical energy source classifications	Sharp edges and corners, classified as MS1 Equipment maximum mass < 7 kg, classified as MS1	P
8.3	Safeguards against mechanical energy sources		N/A
8.4	Safeguards against parts with sharp edges and corners	Accessible edges and corners of the equipment are rounded and are classified as MS1.	P

EN IEC 62368-1			
Clause	Requirement	Remark	Result
8.4.1	Safeguards		P
8.5	Safeguards against moving parts	MS1 moving parts used	P
8.5.1	MS2 or MS3 part required to be accessible for the function of the equipment		N/A
8.5.2	Instructional Safeguard..... :		—
8.5.4	Special categories of equipment comprising moving parts		N/A
8.5.4.1	Large data storage equipment		N/A
8.5.4.2	Equipment having electromechanical device for destruction of media		N/A
8.5.4.2.1	Safeguards and Safety Interlocks..... :	(See Annex F.4 and Annex K)	N/A
8.5.4.2.2	Instructional safeguards against moving parts		N/A
	Instructional Safeguard..... :		—
8.5.4.2.3	Disconnection from the supply		N/A
8.5.4.2.4	Probe type and force (N)..... :		N/A
8.5.5	High Pressure Lamps		N/A
8.5.5.1	Energy Source Classification		N/A
8.5.5.2	High Pressure Lamp Explosion Test..... :	(See appended table 8.5.5.2)	N/A
8.6	Stability		N/A
8.6.1	Product classification		N/A
	Instructional Safeguard..... :		—
8.6.2	Static stability		N/A
8.6.2.2	Static stability test		N/A
	Applied Force..... :		—
8.6.2.3	Downward Force Test		N/A
8.6.3	Relocation stability test		N/A
	Unit configuration during 10° tilt..... :		—
8.6.4	Glass slide test		N/A
8.6.5	Horizontal force test (Applied Force)..... :		N/A
	Position of feet or movable parts..... :		—
8.7	Equipment mounted to wall or ceiling		N/A
8.7.1	Mounting Means (Length of screws (mm) and mounting surface)		N/A
8.7.2	Direction and applied force..... :		N/A
8.8	Handles strength		N/A
8.8.1	Classification		N/A
8.8.2	Applied Force		N/A

EN IEC 62368-1			
Clause	Requirement	Remark	Result
8.9	Wheels or casters attachment requirements		N/A
8.9.1	Classification		N/A
8.9.2	Applied force..... :		—
8.10	Carts, stands and similar carriers		N/A
8.10.1	General		N/A
8.10.2	Marking and instructions		N/A
	Instructional Safeguard..... :		—
8.10.3	Cart, stand or carrier loading test and compliance		N/A
	Applied force..... :		—
8.10.4	Cart, stand or carrier impact test		N/A
8.10.5	Mechanical stability		N/A
	Applied horizontal force (N)..... :		—
8.10.6	Thermoplastic temperature stability (°C)..... :		N/A
8.11	Mounting means for rack mounted equipment		N/A
8.11.1	General		N/A
8.11.2	Product Classification		N/A
8.11.3	Mechanical strength test, variable <i>N</i> :		N/A
8.11.4	Mechanical strength test 250N, including end stops		N/A
8.12	Telescoping or rod antennas.....	(See Annex T)	N/A
	Button/Ball diameter (mm)..... :		—

9	THERMAL BURN INJURY		P
9.2	Thermal energy source classifications		P
9.3	Safeguard against thermal energy sources		P
9.4	Requirements for safeguards		P
9.4.1	Equipment safeguard		P
9.4.2	Instructional safeguard :		N/A

10	RADIATION		N/A
10.2	Radiation energy source classification		N/A
10.2.1	General classification		N/A
10.3	Protection against laser radiation		N/A
	Laser radiation that exists equipment:		—
	Normal, abnormal, single-fault..... :	(See attached laser test report)	N/A
	Instructional safeguard..... :		—
	Tool..... :		—

EN IEC 62368-1			
Clause	Requirement	Remark	Result
10.4	Protection against visible, infrared, and UV radiation		N/A
10.4.1	General		N/A
10.4.1.a)	RS3 for Ordinary and instructed persons.....:		N/A
10.4.1.b)	RS3 accessible to a skilled person.....:		N/A
	Personal safeguard (PPE) instructional safeguard.....:		—
10.4.1.c)	Equipment visible, IR, UV does not exceed RS1...:		N/A
10.4.1.d)	Normal, abnormal, single-fault conditions	(See appended table B.3 & B.4)	N/A
10.4.1.e)	Enclosure material employed as safeguard is opaque.....:		N/A
10.4.1.f)	UV attenuation.....:		N/A
10.4.1.g)	Materials resistant to degradation UV.....:		N/A
10.4.1.h)	Enclosure containment of optical radiation.....:		N/A
10.4.1.i)	Exempt Group under normal operating conditions.....:		N/A
10.4.2	Instructional safeguard.....:		N/A
10.5	Protection against x-radiation		N/A
10.5.1	X- radiation energy source that exists equipment:	(See appended table B.3 & B.4)	N/A
	Normal, abnormal, single fault conditions		N/A
	Equipment safeguards.....:		N/A
	Instructional safeguard for skilled person.....:		N/A
10.5.3	Most unfavourable supply voltage to give maximum radiation.....:		—
	Abnormal and single-fault condition.....:	(See appended table B.3 & B.4)	N/A
	Maximum radiation (pA/kg).....:		N/A
10.6	Protection against acoustic energy sources		N/A
10.6.1	General		N/A
10.6.2	Classification		N/A
	Acoustic output, dB(A).....:		N/A
	Output voltage, unweighted r.m.s.....:		N/A
10.6.4	Protection of persons		N/A
	Instructional safeguards.....:		N/A
	Equipment safeguard prevent ordinary person to RS2.....:		—
	Means to actively inform user of increase sound pressure.....:		—
	Equipment safeguard prevent ordinary person to RS2.....:		—

EN IEC 62368-1			
Clause	Requirement	Remark	Result
10.6.5	Requirements for listening devices (headphones, earphones, etc.)		N/A
10.6.5.1	Corded passive listening devices with analog input		N/A
	Input voltage with 94 dB(A) L_{Aeq} acoustic pressure output.....:		—
10.6.5.2	Corded listening devices with digital input		N/A
	Maximum dB(A).....:		—
10.6.5.3	Cordless listening device		N/A
	Maximum dB(A).....:		—
B	NORMAL OPERATING CONDITION TESTS, ABNORMAL OPERATING CONDITION TESTS AND SINGLE FAULT CONDITION TESTS		P
B.2	Normal Operating Conditions		P
B.2.1	General requirements.....:	(See Test Item Particulars and appended test tables)	P
	Audio Amplifiers and equipment with audio amplifiers.....:	Not such equipment.	N/A
B.2.3	Supply voltage and tolerances	±10%	P
B.2.5	Input test.....:	(See appended table B.2.5)	P
B.3	Simulated abnormal operating conditions		P
B.3.1	General requirements.....:	(See appended table B.3)	N/A
B.3.2	Covering of ventilation openings		N/A
B.3.3	D.C. mains polarity test	The EUT is not connected to a D.C. mains	N/A
B.3.4	Setting of voltage selector.....:	No setting of voltage selector within the EUT	N/A
B.3.5	Maximum load at output terminals.....:		P
B.3.6	Reverse battery polarity	No battery within the EUT	N/A
B.3.7	Abnormal operating conditions as specified in Clause E.2.		N/A
B.3.8	Safeguards functional during and after abnormal operating conditions	All safeguards remained effectively.	P
B.4	Simulated single fault conditions 错误! 未指定书签。		P
B.4.2	Temperature controlling device open or short-circuited.....:	(See appended table B.4)	N/A
B.4.3	Motor tests		N/A
B.4.3.1	Motor blocked or rotor locked increasing the internal ambient temperature	(See Clause G.5)	N/A
B.4.4	Short circuit of functional insulation		P

EN IEC 62368-1			
Clause	Requirement	Remark	Result
B.4.4.1	Short circuit of clearances for functional insulation		P
B.4.4.2	Short circuit of creepage distances for functional insulation		P
B.4.4.3	Short circuit of functional insulation on coated printed boards		N/A
B.4.5	Short circuit and interruption of electrodes in tubes and semiconductors		P
B.4.6	Short circuit or disconnect of passive components		P
B.4.7	Continuous operation of components		N/A
B.4.8	Class 1 and Class 2 energy sources within limits during and after single fault conditions		P
B.4.9	Battery charging under single fault conditions.....:	No battery involved in the EUT	N/A
C	UV RADIATION		N/A
C.1	Protection of materials in equipment from UV radiation		N/A
C.1.2	Requirements		N/A
C.1.3	Test method		N/A
C.2	UV light conditioning test		N/A
C.2.1	Test apparatus		N/A
C.2.2	Mounting of test samples		N/A
C.2.3	Carbon-arc light-exposure apparatus		N/A
C.2.4	Xenon-arc light exposure apparatus		N/A
D	TEST GENERATORS		N/A
D.1	Impulse test generators		N/A
D.2	Antenna interface test generator		N/A
D.3	Electronic pulse generator		N/A
E	TEST CONDITIONS FOR EQUIPMENT CONTAINING AUDIO AMPLIFIERS		N/A
E.1	Audio amplifier normal operating conditions		N/A
	Audio signal voltage (V).....:		—
	Rated load impedance (Ω)		
E.2	Audio amplifier abnormal operating conditions		N/A
F	EQUIPMENT MARKINGS, INSTRUCTIONS, AND INSTRUCTIONAL SAFEGUARDS		P
F.1	General requirements		P
	Instructions – Language	Evaluated the user manual in English version. The manufacturer commits to provide them in the language of the countries where the product will be distributed.	—
F.2	Letter symbols and graphical symbols		P

EN IEC 62368-1			
Clause	Requirement	Remark	Result
F.2.1	Letter symbols according to IEC60027-1		P
F.2.2	Graphic symbols IEC, ISO or manufacturer specific		P
F.3	Equipment markings		P
F.3.1	Equipment marking locations	On the product	P
F.3.2	Equipment identification markings		P
F.3.2.1	Manufacturer identification	See marking	—
F.3.2.2	Model identification	See marking	—
F.3.3	Equipment rating markings		P
F.3.3.1	Equipment with direct connection to mains	Considered	P
F.3.3.2	Equipment without direct connection to mains		N/A
F.3.3.3	Nature of supply voltage.....	See marking	—
F.3.3.4	Rated voltage.....	See marking	—
F.3.3.4	Rated frequency.....	See marking	—
F.3.3.6	Rated current or rated power.....		—
F.3.3.7	Equipment with multiple supply connections		N/A
F.3.4	Voltage setting device		N/A
F.3.5	Terminals and operating devices		P
F.3.5.1	Mains appliance outlet and socket-outlet markings.....		N/A
F.3.5.2	Switch position identification marking.....		N/A
F.3.5.3	Replacement fuse identification and rating markings.....		P
F.3.5.4	Replacement battery identification marking.....		N/A
F.3.5.5	Terminal marking location		N/A
F.3.6	Equipment markings related to equipment classification		N/A
F.3.6.1	Class I Equipment		P
F.3.6.1.1	Protective earthing conductor terminal		P
F.3.6.1.2	Neutral conductor terminal		P
F.3.6.1.3	Protective bonding conductor terminals		N/A
F.3.6.2	Class II equipment (IEC60417-5172)		N/A
F.3.6.2.1	Class II equipment with or without functional earth		N/A
F.3.6.2.2	Class II equipment with functional earth terminal marking		N/A
F.3.7	Equipment IP rating marking	IPX0	—
F.3.8	External power supply output marking	Marked on the label	P

EN IEC 62368-1			
Clause	Requirement	Remark	Result
F.3.9	Durability, legibility and permanence of marking	Marking plate was provided on the enclosure and it was legible, permanent and easily discernible.	P
F.3.10	Test for permanence of markings	Complied	P
F.4	Instructions		P
	a) Equipment for use in locations where children not likely to be present - marking	The accessibility of equipment was evaluated by using test probe of Figure V.2.	P
	b) Instructions given for installation or initial use	Relevant safety caution texts and installation instruction are available.	P
	c) Equipment intended to be fastened in place	See above.	P
	d) Equipment intended for use only in restricted access area	The EUT is not such type equipment	N/A
	e) Audio equipment terminals classified as ES3 and other equipment with terminals marked in accordance F.3.6.1	No such terminals provided.	N/A
	f) Protective earthing employed as safeguard		P
	g) Protective earthing conductor current exceeding ES 2 limits		N/A
	h) Symbols used on equipment	Complied	P
	i) Permanently connected equipment not provided with all-pole mains switch	The EUT is not a permanently connected equipment	N/A
j)	j) Replaceable components or modules providing safeguard function	No replaceable components	N/A
F.5	Instructional safeguards	No instructional safeguard is considered as necessary.	N/A
	Where "instructional safeguard" is referenced in the test report it specifies the required elements, location of marking and/or instruction	No instructional safeguard required in the equipment.	N/A
G	COMPONENTS		P
G.1	Switches		N/A
G.1.1	General requirements		N/A
G.1.2	Ratings, endurance, spacing, maximum load		N/A
G.2	Relays		N/A
G.2.1	General requirements		N/A
G.2.2	Overload test		N/A
G.2.3	Relay controlling connectors supply power		N/A
G.2.4	Mains relay, modified as stated in G.2		N/A
G.3	Protection Devices		P
G.3.1	Thermal cut-offs		N/A

EN IEC 62368-1			
Clause	Requirement	Remark	Result
G.3.1-2A) &b)	Thermal cut-outs separately approved according to IEC 60730 with conditions indicated in a) & b)		N/A
G.3.1.1c)	Thermal cut-outs tested as part of the equipment as indicated in c)		N/A
G.3.1.2	Thermal cut-off connections maintained and secure		N/A
G.3.2	Thermal links		N/A
G.3.2.1a)	Thermal links separately tested with IEC 60691		N/A
G.3.2.1b)	Thermal links tested as part of the equipment		N/A
	Aging hours (H)..... :		—
	Single Fault Condition..... :		—
	Test Voltage (V) and Insulation Resistance (Ω)... :		—
G.3.3	PTC Thermistors	No PTC thermistor provided within the equipment.	N/A
G.3.4	Overcurrent protection devices		N/A
G.3.5	Safeguards components not mentioned in G.3.1 to G.3.5		N/A
G.3.5.1	Non-resettable devices suitably rated and marking provided		N/A
G.3.5.2	Single faults conditions..... :	(See appended Table B.4)	N/A
G.4	Connectors		N/A
G.4.1	Spacings		N/A
G.4.2	Mains connector configuration		N/A
G.4.3	Plug is shaped that insertion into mains socket-outlets or appliance coupler is unlikely		N/A
G.5	Wound Components		P
G.5.1	Wire insulation in wound components.....		P
G.5.1.2 a)	Two wires in contact inside wound component, angle between 45° and 90°		P
G.5.1.2 b)	Construction subject to routine testing		P
G.5.2	Endurance test on wound components		N/A
G.5.2.1	General test requirements		N/A
G.5.2.2	Heat run test		N/A
	Time (s)..... :		—
	Temperature (°C)..... :		—
G.5.2.3	Wound Components supplied by mains		N/A
G.5.3	Transformers		P
G.5.3.1	Requirements applied (IEC61204-7, IEC61558-1/-2, and/or EN IEC 62368-1)..... :		P
	Position..... :		—

EN IEC 62368-1			
Clause	Requirement	Remark	Result
	Method of protection		—
G.5.3.2	Insulation		P
	Protection from displacement of windings.....		—
G.5.3.3	Overload test.....		P
G.5.3.3.1	Test conditions	Will not cause safety protection to fail	P
G.5.3.3.2	Winding Temperatures testing in the unit		N/A
G.5.3.3.3	Winding Temperatures - Alternative test method		N/A
G.5.4	Motors		N/A
G.5.4.1	General requirements		N/A
	Position		—
G.5.4.2	Test conditions		N/A
G.5.4.3	Running overload test		N/A
G.5.4.4	Locked-rotor overload test		N/A
	Test duration (days)		—
G.5.4.5	Running overload test for d.c. motors in secondary circuits		N/A
G.5.4.5.2	Tested in the unit		N/A
	Electric strength test (V).....		—
G.5.4.5.3	Tested on the Bench - Alternative test method; test time (h)		N/A
	Electric strength test (V).....		—
G.5.4.6	Locked-rotor overload test for d.c. motors in secondary circuits		N/A
G.5.4.6.2	Tested in the unit		N/A
	Maximum Temperature		N/A
	Electric strength test (V)		N/A
G.5.4.6.3	Tested on the bench - Alternative test method; test time (h).....		N/A
	Electric strength test (V).....		N/A
G.5.4.7	Motors with capacitors		N/A
G.5.4.8	Three-phase motors		N/A
G.5.4.9	Series motors		N/A
	Operating voltage		—
G.6	Wire Insulation		N/A
G.6.1	General		N/A
G.6.2	Solvent-based enamel wiring insulation		N/A
G.7	Mains supply cords		N/A

EN IEC 62368-1			
Clause	Requirement	Remark	Result
G.7.1	General requirements		N/A
	Type.....:		—
	Rated current (A).....:		—
	Cross-sectional area (mm ²), (AWG).....:		—
G.7.2	Compliance and test method		N/A
G.7.3	Cord anchorages and strain relief for non-detachable power supply cords		N/A
G.7.3.2	Cord strain relief		N/A
G.7.3.2.1	Requirements		N/A
	Strain relief test force (N).....:		—
G.7.3.2.2	Strain relief mechanism failure		N/A
G.7.3.2.3	Cord sheath or jacket position, distance (mm).....:		—
G.7.3.2.4	Strain relief comprised of polymeric material		N/A
G.7.4	Cord Entry.....:	(See appended table 5.4.11.1)	N/A
G.7.5	Non-detachable cord bend protection		N/A
G.7.5.1	Requirements		N/A
G.7.5.2	Mass (g)		—
	Diameter (m).....:		—
	Temperature (°C).....:		—
G.7.6	Supply wiring space		N/A
G.7.6.2	Stranded wire		N/A
G.7.6.2.1	Test with 8 mm strand		N/A
G.8	Varistors		N/A
G.8.1	General requirements		N/A
G.8.2	Safeguard against shock		N/A
G.8.3	Safeguard against fire		N/A
G.8.3.2	Varistor overload test.....:	(See appended table B.3)	N/A
G.8.3.3	Temporary overvoltage.....:	(See appended table B.3)	N/A
G.9	Integrated Circuit (IC) Current Limiters		N/A
G.9.1 a)	Manufacturer defines limit at max. 5A.		N/A
G.9.1 b)	Limiters do not have manual operator or reset		N/A
G.9.1 c)	Supply source does not exceed 250 VA		—
G.9.1 d)	IC limiter output current (max. 5A).....:		—
G.9.1 e)	Manufacturers' defined drift		—
G.9.2	Test Program 1		N/A
G.9.3	Test Program 2		N/A

EN IEC 62368-1			
Clause	Requirement	Remark	Result
G.9.4	Test Program 3		N/A
G.10	Resistors		N/A
G.10.1	General requirements		N/A
G.10.2	Resistor test		N/A
G.10.3	Test for resistors serving as safeguards between the mains and an external circuit consisting of a coaxial cable		N/A
G.10.3.1	General requirements		N/A
G.10.3.2	Voltage surge test		N/A
G.10.3.3	Impulse test		N/A
G.11	Capacitor and RC units		N/A
G.11.1	General requirements		N/A
G.11.2	Conditioning of capacitors and RC units		N/A
G.11.3	Rules for selecting capacitors		N/A
G.12	Optocouplers		N/A
	Optocouplers comply with IEC 60747-5-5:2007 Spacing or Electric Strength Test (specify option and test results)..... :		N/A
	Type test voltage Vini		—
	Routine test voltage, Vini,b		—
G.13	Printed boards		P
G.13.1	General requirements		P
G.13.2	Uncoated printed boards		N/A
G.13.3	Coated printed boards		N/A
G.13.4	Insulation between conductors on the same inner surface		N/A
	Compliance with cemented joint requirements (Specify construction)..... :		—
G.13.5	Insulation between conductors on different surfaces		N/A
	Distance through insulation..... :	(See appended table 5.4.4.5)	N/A
	Number of insulation layers (pcs)		—
G.13.6	Tests on coated printed boards		N/A
G.13.6.1	Sample preparation and preliminary inspection		N/A
G.13.6.2a)	Thermal conditioning		N/A
G.13.6.2b)	Electric strength test		N/A
G.13.6.2c)	Abrasion resistance test		N/A
G.14	Coating on components terminals		N/A

EN IEC 62368-1			
Clause	Requirement	Remark	Result
G.14.1	Requirements	(See G.13)	N/A
G.15	Liquid filled components		N/A
G.15.1	General requirements		N/A
G.15.2	Requirements		N/A
G.15.3	Compliance and test methods		N/A
G.15.3.1	Hydrostatic pressure test		N/A
G.15.3.2	Creep resistance test		N/A
G.15.3.3	Tubing and fittings compatibility test		N/A
G.15.3.4	Vibration test		N/A
G.15.3.5	Thermal cycling test		N/A
G.15.3.6	Force test		N/A
G.15.4	Compliance		N/A
G.16	IC including capacitor discharge function (ICX)		N/A
a)	Humidity treatment in accordance with sc5.4.8 – 120 hours		N/A
b)	Impulse test using circuit 2 with $U_c =$ to transient voltage		N/A
C1)	Application of ac voltage at 110% of rated voltage for 2.5 minutes		N/A
C2)	Test voltage		—
D1)	10,000 cycles on and off using capacitor with smallest capacitance resistor with largest resistance specified by manufacturer		N/A
D2)	Capacitance		—
D3)	Resistance		—
H	CRITERIA FOR TELEPHONE RINGING SIGNALS		N/A
H.1	General		N/A
H.2	Method A		N/A
H.3	Method B		N/A
H.3.1	Ringing signal		N/A
H.3.1.1	Frequency (Hz)		—
H.3.1.2	Voltage (V)		—
H.3.1.3	Cadence; time (s) and voltage (V)		—
H.3.1.4	Single fault current (mA):.....		—
H.3.2	Tripping device and monitoring voltage.....		N/A
H.3.2.1	Conditions for use of a tripping device or a monitoring voltage complied with		N/A
H.3.2.2	Tripping device		N/A

EN IEC 62368-1			
Clause	Requirement	Remark	Result
H.3.2.3	Monitoring voltage (V).....:		—
J	INSULATED WINDING WIRES FOR USE WITHOUT INTERLEAVED INSULATION		P
	General requirements	(See separate test report)	P
K	SAFETY INTERLOCKS		N/A
K.1	General requirements		N/A
K.2	Components of safety interlock safeguard mechanism	(See Annex G)	N/A
K.3	Inadvertent change of operating mode		N/A
K.4	Interlock safeguard override		N/A
K.5	Fail-safe		N/A
	Compliance.....:	(See appended table B.4)	N/A
K.6	Mechanically operated safety interlocks		N/A
K.6.1	Endurance requirement		N/A
K.6.2	Compliance and Test method.....:		N/A
K.7	Interlock circuit isolation		N/A
K.7.1	Separation distance for contact gaps & interlock circuit elements (type and circuit location)		N/A
K.7.2	Overload test, Current (A).....:		N/A
K.7.3	Endurance test		N/A
K.7.4	Electric strength test	(See appended table 5.4.11)	N/A
L	DISCONNECT DEVICES		P
L.1	General requirements		P
L.2	Permanently connected equipment		N/A
L.3	Parts that remain energized		N/A
L.4	Single phase equipment		P
L.5	Three-phase equipment		N/A
L.6	Switches as disconnect devices		N/A
L.7	Plugs as disconnect devices		P
L.8	Multiple power sources		N/A
M	EQUIPMENT CONTAINING BATTERIES AND THEIR PROTECTION CIRCUITS		N/A
M.1	General requirements	No such battery used.	N/A
M.2	Safety of batteries and their cells		N/A
M.2.1	Requirements		N/A
M.2.2	Compliance and test method (identify method)...:		N/A
M.3	Protection circuits		N/A
M.3.1	Requirements		N/A
M.3.2	Tests		N/A

EN IEC 62368-1			
Clause	Requirement	Remark	Result
	- Overcharging of a rechargeable battery		N/A
	- Unintentional charging of a non-rechargeable battery		N/A
	- Reverse charging of a rechargeable battery		N/A
	- Excessive discharging rate for any battery		N/A
M.3.3	Compliance	(See appended Tables and Annex M and M.4)	N/A
M.4	Additional safeguards for equipment containing secondary lithium battery		N/A
M.4.1	General		N/A
M.4.2	Charging safeguards		N/A
M.4.2.1	Charging operating limits		N/A
M.4.2.2a)	Charging voltage, current and temperature..... :	(See Table M.4)	—
M.4.2.2 b)	Single faults in charging circuitry..... :	(See Annex B.4)	—
M.4.3	Fire Enclosure		N/A
M.4.4	Endurance of equipment containing a secondary lithium battery		N/A
M.4.4.2	Preparation		N/A
M.4.4.3	Drop and charge/discharge function tests		N/A
	Drop		N/A
	Charge		N/A
	Discharge		N/A
M.4.4.4	Charge-discharge cycle test		N/A
M.4.4.5	Result of charge-discharge cycle test		N/A
M.5	Risk of burn due to short circuit during carrying		N/A
M.5.1	Requirement		N/A
M.5.2	Compliance and Test Method (Test of P.2.3)		N/A
M.6	Prevention of short circuits and protection from other effects of electric current		N/A
M.6.1	Short circuits		N/A
M.6.1.1	General requirements		N/A
M.6.1.2	Test method to simulate an internal fault		N/A
M.6.1.3	Compliance (Specify M.6.1.2 or alternative method)		N/A
M.6.2	Leakage current (mA)		N/A
M.7	Risk of explosion from lead acid and NiCd batteries		N/A
M.7.1	Ventilation preventing explosive gas concentration		N/A

EN IEC 62368-1			
Clause	Requirement	Remark	Result
M.7.2	Compliance and test method		N/A
M.8	Protection against internal ignition from external spark sources of lead acid batteries		N/A
M.8.1	General requirements		N/A
M.8.2	Test method		N/A
M.8.2.1	General requirements		N/A
M.8.2.2	Estimation of hypothetical volume V_z (m ³ /s)..... :		—
M.8.2.3	Correction factors..... :		—
M.8.2.4	Calculation of distance d (mm) :		—
M.9	Preventing electrolyte spillage		N/A
M.9.1	Protection from electrolyte spillage		N/A
M.9.2	Tray for preventing electrolyte spillage		N/A
M.10	Instructions to prevent reasonably foreseeable misuse (Determination of compliance: inspection, data review; or abnormal testing)		N/A
N	ELECTROCHEMICAL POTENTIALS		N/A
	Metal(s) used..... :	Pollution degree considered	—
O	MEASUREMENT OF CREEPAGE DISTANCES AND CLEARANCES		P
	Figures O.1 to O.20 of this Annex applied..... :		—
P	SAFEGUARDS AGAINST ENTRY OF FOREIGN OBJECTS AND SPILLAGE OF INTERNAL LIQUIDS		N/A
P.1	General requirements	No opennigs	N/A
P.2.2	Safeguards against entry of foreign object		N/A
	Location and Dimensions (mm) :		—
P.2.3	Safeguard against the consequences of entry of foreign object		N/A
P.2.3.1	Safeguards against the entry of a foreign object		N/A
	Openings in transportable equipment		N/A
	Transportable equipment with metalized plastic parts..... :		N/A
P.2.3.2	Openings in transportable equipment in relation to metalized parts of a barrier or enclosure (identification of supplementary safeguard) :		N/A
P.3	Safeguards against spillage of internal liquids		N/A
P.3.1	General requirements		N/A
P.3.2	Determination of spillage consequences		N/A
P.3.3	Spillage safeguards		N/A
P.3.4	Safeguards effectiveness		N/A
P.4	Metallized coatings and adhesive securing parts		N/A

EN IEC 62368-1			
Clause	Requirement	Remark	Result
P.4.2 a)	Conditioning testing		N/A
	Tc (°C)..... :		—
	Tr (°C)..... :		—
	Ta (°C)..... :		—
P.4.2 b)	Abrasion testing	(See G.13.6.2)	N/A
P.4.2 c)	Mechanical strength testing.....	(See Annex T)	N/A
Q	CIRCUITS INTENDED FOR INTERCONNECTION WITH BUILDING WIRING		P
Q.1	Limited power sources		P
Q.1.1 a)	Inherently limited output		N/A
Q.1.1 b)	Impedance limited output		P
	- Regulating network limited output under normal operating and simulated single fault condition		P
Q.1.1 c)	Overcurrent protective device limited output		N/A
Q.1.1 d)	IC current limiter complying with G.9		N/A
Q.1.2	Compliance and test method		N/A
Q.2	Test for external circuits – paired conductor cable		N/A
	Maximum output current (A)		—
	Current limiting method.....		—
R	LIMITED SHORT CIRCUIT TEST		N/A
R.1	General requirements		N/A
R.2	Determination of the overcurrent protective device and circuit		N/A
R.3	Test method Supply voltage (V) and short-circuit current (A)).		N/A
S	TESTS FOR RESISTANCE TO HEAT AND FIRE		P
S.1	Flammability test for fire enclosures and fire barrier materials of equipment where the steady state power does not exceed 4 000 W		N/A
	Samples, material.....	V-0 enclosure used	—
	Wall thickness (mm).....		—
	Conditioning (°C).....		—
	Test flame according to IEC 60695-11-5 with conditions as set out		N/A
	- Material not consumed completely		N/A
	- Material extinguishes within 30s		N/A
	- No burning of layer or wrapping tissue		N/A
S.2	Flammability test for fire enclosure and fire barrier integrity	V-0 enclosure used	P

EN IEC 62368-1			
Clause	Requirement	Remark	Result
	Samples, material.....:		—
	Wall thickness (mm).....:		—
	Conditioning (°C).....:		—
	Test flame according to IEC 60695-11-5 with conditions as set out		N/A
	Test specimen does not show any additional hole		N/A
S.3	Flammability test for the bottom of a fire enclosure		P
	Samples, material.....:		—
	Wall thickness (mm).....:		—
	Cheesecloth did not ignite		N/A
S.4	Flammability classification of materials		N/A
S.5	Flammability test for fire enclosures and fire barrier materials of equipment where the steady state power does not exceed 4 000 W		N/A
	Samples, material.....:		—
	Wall thickness (mm).....:		—
	Conditioning (test condition), (°C).....:		—
	Test flame according to IEC 60695-11-20 with conditions as set out		N/A
	After every test specimen was not consumed completely		N/A
	After fifth flame application, flame extinguished within 1 min		N/A
T	MECHANICAL STRENGTH TESTS		P
T.1	General requirements		P
T.2	Steady force test, 10 N	(See appended table T.2)	P
T.3	Steady force test, 30 N	(See appended table T3)	P
T.4	Steady force test, 100 N	(See appended table T4)	P
T.5	Steady force test, 250 N	(See appended table T5)	N/A
T.6	Enclosure impact test	(See appended table T6)	N/A
	Fall test		N/A
	Swing test		N/A
T.7	Drop test	(See appended table T7)	P
T.8	Stress relief test.....	(See appended table T8)	P
T.9	Impact Test (glass)		N/A
T.9.1	General requirements		N/A
T.9.2	Impact test and compliance		N/A

EN IEC 62368-1			
Clause	Requirement	Remark	Result
	Impact energy (J).....:		—
	Height (m).....:		—
T.10	Glass fragmentation test.....:	(See sub-clause 4.4.4.9)	N/A
T.11	Test for telescoping or rod antennas		N/A
	Torque value (Nm)		—
U	MECHANICAL STRENGTH OF CATHODE RAY TUBES (CRT) AND PROTECTION AGAINST THE EFFECTS OF IMPLOSION		N/A
U.1	General requirements		N/A
U.2	Compliance and test method for non-intrinsically protected CRTs		N/A
U.3	Protective Screen.....:	(See Annex T)	N/A
V	DETERMINATION OF ACCESSIBLE PARTS (FINGERS, PROBES AND WEDGES)		N/A
V.1	Accessible parts of equipment		N/A
V.2	Accessible part criterion		N/A

4.8.4, 4.8.5	TABLE: Lithium coin/button cell batteries mechanical tests			N/A
(The following mechanical tests are conducted in the sequence noted.)				
4.8.4.2	TABLE: Stress Relief test			—
Part		Material	Oven Temperature (°C)	Comments
4.8.4.3	TABLE: Battery replacement test			—
Battery part no.....:				—
Battery Installation/withdrawal			Battery Installation/Removal Cycle	Comments
			1	
			2	
			3	
			4	
			5	
			6	
			8	
			9	
			10	

EN IEC 62368-1				
Clause	Requirement		Remark	Result
4.8.4, 4.8.5	TABLE: Lithium coin/button cell batteries mechanical tests			N/A
(The following mechanical tests are conducted in the sequence noted.)				
4.8.4.4	TABLE: Drop test			—
Impact Area		Drop Distance	Drop No.	Observations
			1	
			2	
4.8.4.5	TABLE: Impact			—
Impacts per surface		Surface tested	Impact energy (Nm)	Comments
4.8.4.6	TABLE: Crush test			—
Test position		Surface tested	Crushing Force (N)	Duration force applied (s)
Supplementary information:				

EN IEC 62368-1			
Clause	Requirement	Remark	Result

4.8.5	TABLE: Lithium coin/button cell batteries mechanical test result			N/A
Test position		Surface tested	Force (N)	Duration force applied (s)
Supplementary information:				

5.2	Table: Classification of electrical energy sources						P
5.2.2.2 – Steady State Voltage and Current conditions							
No.	Supply Voltage	Location (e.g. circuit designation)	Test conditions	Parameters			ES Class
				U (Vrms or Vpk)	I (Apk or Arms)	Hz	
1	110-240V	Primary ciurcuit	Normal	--	--	--	ES3
			Abnormal	--	--	--	
			Single fault – SC/OC	--	--	--	
2	110-240V	L/N to plastic enclosure	Normal	4.96	--	--	ES1
			Abnormal	5.20	--	--	
			Single fault – SC/OC	0	--	--	

EN IEC 62368-1			
Clause	Requirement	Remark	Result

5.2.2.3 - Capacitance Limits

No.	Supply Voltage	Location (e.g. circuit designation)	Test conditions	Parameters		ES Class
				Capacitance, nF	Upk (V)	
--	--	--	Normal	--	--	--
			Abnormal	--	--	
			Single fault – SC/OC	--	--	

5.2.2.4 - Single Pulses

No.	Supply Voltage	Location (e.g. circuit designation)	Test conditions	Parameters			ES Class
				Duration (ms)	Upk (V)	Ipk (mA)	
--	--	--	Normal	--	--	--	--
			Abnormal	--	--	--	
			Single fault – SC/OC	--	--	--	

5.2.2.5 - Repetitive Pulses

No.	Supply Voltage	Location (e.g. circuit designation)	Test conditions	Parameters			ES Class
				Off time (ms)	Upk (V)	Ipk (mA)	
--	--	--	Normal	--	--	--	--
			Abnormal	--	--	--	
			Single fault – SC/OC	--	--	--	

Test Conditions:

Normal –

Abnormal -

Supplementary information: SC=Short Circuit, OC=Short Circuit

EN IEC 62368-1			
Clause	Requirement	Remark	Result

5.4.1.4, 6.3.2, 9.0, B.2.6	TABLE: Temperature measurements						P
	Supply voltage (V)	100V/50Hz	110-240V/60Hz	--	--	—	
	Ambient T_{min} (°C)	24.2	25	25.3	24.8	--	—
	Ambient T_{max} (°C)	24.2	25	25.2	24.7	--	—
Maximum measured temperature T of part/at.....:		T (°C)					Allowed T_{max} (°C)
power cable		41.2	54.1	29.9	54.2		80
Outside of the metal shell		65	48.3	32.3	48.3		80
Inside the metal shell		54.2	41.2	41.2	41.8		Ref.
CE1 capacitor		41.2	65	65	65.2		80
Enter NTC1		65	54.7	54.2	54.1		120
Output Z1		54.2	41.2	41.2	41.2		120
Output Z2		75.1	65.1	65	65		120
PCB		54.2	41.3	54.2	54.7		130
Transformer skeleton		75.9	65.2	54.2	75.1		120
Transformer coil		54.8	54.2	41.2	56.9		120
CE5 capacitor		48.3	75.1	65	58.8		80
CE3 capacitor		41.2	65.1	41.2	71.1		80
CE2 capacitor		65	54.1	65	65.3		80
U1		54.2	54.2	54.2	29.7		80
U2		32.3	48.1	48.3	32.3		80
U3		34.2	41.2	41.2	34.2		80
Supplementary information:							
Temperature T of winding:		t_1 (°C)	R_1 (Ω)	t_2 (°C)	R_2 (Ω)	T (°C)	Allowed T_{max} (°C)
Supplementary information: N/A							

5.4.1.10.2	TABLE: Vicat softening temperature of thermoplastics		N/A
Penetration (mm).....:			—
Object/ Part No./Material	Manufacturer/t rademark	T softening (°C)	
supplementary information:			

EN IEC 62368-1			
Clause	Requirement	Remark	Result

5.4.1.10.3	TABLE: Ball pressure test of thermoplastics			P
Allowed impression diameter (mm)		≤ 2 mm		—
Object/Part No./Material	Manufacturer/trademark	Test temperature (°C)	Impression diameter (mm)	
Transformer bobbin	See tabel 4.1.2	125	1.0	
Plastic enclosure	See tabel 4.1.2	125	1.3	
Supplementary information:				

5.4.2.2, 5.4.2.4 and 5.4.3	TABLE: Minimum Clearances/Creepage distance						P
Clearance (cl) and creepage distance (cr) at/of/between:	Up (V)	U r.m.s. (V)	Frequency (kHz) ¹	Required cl (mm)	cl (mm) ²	Required ³ cr (mm)	cr (mm)
Different polarity of L/N (before fuse)	340	240	<30	1.3	2.85	2.6	2.85
Different polarity of L/N to plastic enclosure	340	240	<30	3.0	>6.0	5.0	>6.0
Primary parts to secondary parts of transformer	340	240	<30	3.0	6.76	5.0	6.76
Trace between terminals CY1	340	240	<30	3.0	7.14	5.0	7.14
Supplementary information:							
Note 1: Only for frequency above 30 kHz							
Note 2: See table 5.4.2.4 if this is based on electric strength test							
Note 3: Provide Material Group							

5.4.2.3	TABLE: Minimum Clearances distances using required withstand voltage			P
	Overvoltage Category (OV):			II
	Pollution Degree:			IIIb
Clearance distanced between:		Required withstand voltage	Required cl (mm)	Measured cl (mm)
L to N		2500V	1.5	>3.0
Primary and secondary wire		2500V	3.0	>4.5
Supplementary information:				

EN IEC 62368-1			
Clause	Requirement	Remark	Result

5.4.2.4	TABLE: Clearances based on electric strength test			N/A
Test voltage applied between:		Required cl (mm)	Test voltage (kV) peak/ r.m.s. / d.c.	Breakdown Yes / No
Supplementary information:				

5.4.4.2, 5.4.4.5 c) 5.4.4.9	TABLE: Distance through insulation measurements					P
Distance through insulation di at/of:		Peak voltage (V)	Frequency (kHz)	Material	Required DTI (mm)	DTI (mm)
Plastic enclosure		340	<30	See table 4.1.2	0.4	2.14
Insulation tape		340	<30	See table 4.1.2	2layers	2 layers
Supplementary information:						

5.4.9	TABLE: Electric strength tests			P
Test voltage applied between:		Voltage shape (AC, DC)	Test voltage (V)	Breakdown Yes / No
Functional:				
Between L and N (Fusen F1 opened)		DC	2500	No
Basic/supplementary:				
---		--	--	--
Reinforced:				
L&N to output		DC	4000	No
L&N to plastic enclosure (with metal foil)		DC	4000	No
Transformer primary and secondary		DC	4000	No
1 layer insulation tape of transformer		DC	4000	No
Routine Tests:				
---		--	--	--
Supplementary information:				

EN IEC 62368-1			
Clause	Requirement	Remark	Result

5.5.2.2	TABLE: Stored discharge on capacitors					N/A
Supply Voltage (V), Hz	Test Location	Operating Condition (N, S)	Switch position On or off	Measured Voltage (after 2 seconds)	ES Classification	
Supplementary information: X-capacitors installed for testing are: <input type="checkbox"/> bleeding resistor rating: <input type="checkbox"/> ICX: Notes: A. Test Location: Phase to Neutral; Phase to Phase; Phase to Earth; and/or Neutral to Earth B. Operating condition abbreviations: N – Normal operating condition (e.g., normal operation, or open fuse); S –Single fault condition						

5.6.6.2	TABLE: Resistance of protective conductors and terminations					N/A
Accessible part	Test current (A)	Duration (min)	Voltage drop (V)	Resistance (Ω)		
Supplementary information:						

EN IEC 62368-1			
Clause	Requirement	Remark	Result

5.7.2.2, 5.7.4	TABLE: Earthed accessible conductive part		N/A
Supply voltage.....:			—
Location		Test conditions specified in 6.1 of IEC 60990 or Fault Condition No in IEC 60990 clause 6.2.2.1 through 6.2.2.8, except for 6.2.2.7	Touch current (mA)
		1	
		2*	
		3	
		4	
		5	
		6	
		8	
Supplementary Information: Notes: [1] Supply voltage is the anticipated maximum Touch Voltage [2] Earthed neutral conductor [Voltage differences less than 1% or more] [3] Specify method used for measurement as described in IEC 60990 sub-clause 4.3 [4] IEC60990, sub-clause 6.2.2.7, Fault 7 not applicable. [5] (*) IEC60990, sub-clause 6.2.2.2 is not applicable if switch or disconnect device (e.g., appliance coupler) provided.			

6.2.2	Table: Electrical power sources (PS) measurements for classification				P
Source	Description	Measurement	Max Power after 3 s	Max Power after 5 s*)	PS Classification
Output terminal	Normal	Power (W) :	--	4.96	PS1
		V _A (V) :	--	4.96	
		I _A (A) :	--	1	
All primary circuit	Normal	Power (W) :	--	--	PS3 (declared)
		V _A (V) :	--	--	
		I _A (A) :	--	--	

EN IEC 62368-1			
Clause	Requirement	Remark	Result

6.2.3.1	Table: Determination of Potential Ignition Sources (Arcing PIS)				N/A
Location		Open circuit voltage After 3 s (V _p)	Measured r.m.s current (I _{rms})	Calculated value (V _p × I _{rms})	Arcing PIS? Yes / No
<p>Supplementary information:</p> <p>An Arcing PIS requires a minimum of 50 V (peak) a.c. or d.c. An Arcing PIS is established when the product of the open circuit voltage (V_p) and normal operating condition rms current (I_{rms}) is greater than 15.</p>					

6.2.3.2	Table: Determination of Potential Ignition Sources (Resistive PIS)				P
Circuit Location (x-y)	Operating Condition (Normal / Describe Single Fault)	Measured wattage or VA During first 30 s (W / VA)	Measured wattage or VA After 30 s (W / VA)	Protective Circuit, Regulator, or PTC Operated? Yes / No (Comment)	Resistive PIS? Yes/No
All internal circuits/ components	--	--	--	--	Yes
<p>Supplementary Information:</p> <p>A combination of voltmeter, VA and ammeter IA may be used instead of a wattmeter.</p> <p>If a separate voltmeter and ammeter are used, the product of (VA × IA) is used to determine Resistive PIS classification.</p> <p>A Resistive PIS: (a) dissipates more than 15 W, measured after 30 s of normal operation, or (b) under single fault conditions has either a power exceeding 100 W measured immediately after the introduction of the fault if electronic circuits, regulators or PTC devices are used, or has an available power exceeding 15 W measured 30 s after introduction of the fault.</p>					

EN IEC 62368-1			
Clause	Requirement	Remark	Result

8.5.5	TABLE: High Pressure Lamp		N/A
Description		Values	Energy Source Classification
Lamp type..... :			—
Manufacturer..... :			—
Cat no..... :			—
Pressure (cold) (MPa)..... :			MS_
Pressure (operating) (MPa)..... :			MS_
Operating time (minutes)..... :			—
Explosion method..... :			—
Max particle length escaping enclosure (mm). :			MS_
Max particle length beyond 1 m (mm)..... :			MS_
Overall result :			
Supplementary information:			

B.2.5	TABLE: Input test						P
U (V)	I (A)	I rated (A)	P (W)	P rated (W)	Fuse No	I fuse (A)	Condition/status
264V/50Hz	0.065	--	6.86	--	--	--	Max normal load
264V/60Hz	0.065	--	6.86	--	--	--	Max normal load
110-240V/50Hz	0.067	--	6.89	--	--	--	Max normal load
110-240V/60Hz	0.067	--	6.89	--	--	--	Max normal load
100V/50Hz	0.108	1	7.00	--	--	--	Max normal load
100V/60Hz	0.108	1	7.00	--	--	--	Max normal load
90V/50Hz	0.110	--	7.02	--	--	--	Max normal load
90V/60Hz	0.110	--	7.02	--	--	--	Max normal load

EN IEC 62368-1			
Clause	Requirement	Remark	Result

B.3	TABLE: Abnormal operating condition tests							N/A
Ambient temperature (°C)								—
Power source for EUT: Manufacturer, model/type, output rating ...					See page 2			—
Component No.	Abnormal Condition	Supply voltage, (V)	Test time (ms)	Fuse no.	Fuse current, (A)	T-couple	Temp. (°C)	Observation
--	--	--	--	--	--	--	--	--
Supplementary information: Test table is provided to record abnormal and fault conditions for all applicable energy sources including Thermal burn injury. Column "Abnormal/Fault." Specify if test condition by indicating "Abnormal" then the condition for a Clause B.3 test or "Single Fault" then the condition for Clause B.4.								

B.4	TABLE: Abnormal operating condition tests							P
Ambient temperature (°C)					25°C if not mentioned			—
Power source for EUT: Manufacturer, model/type, output rating ...					See page 2			—
Component No.	Abnormal Condition	Supply voltage, (V)	Test time (ms)	Fuse no.	Fuse current, (A)	T-couple	Temp. (°C)	Observation
R1	S-C	110-240V/60Hz	<1s	FR1	--	--	--	Fuse opend, no broken
C1	S-C	110-240V/60Hz	<1s	FR1	--	--	--	Fuse opend, no broken
U1	S-C	110-240V/60Hz	<1s	FR1	--	--	--	Fuse opend, no broken
C6	S-C	110-240V/60Hz	<1s	FR1	--	--	--	Fuse opend, no broken
DB1	S-C	110-240V/60Hz	<1s	FR1	--	--	--	Fuse opend, no broken
R5	S-C	110-240V/60Hz	<1s	FR1	--	--	--	Output shutdown, no hazard, no broken
Transformer(Pin A to Pin B)	Overload	110-240V/60Hz	4 hours 15mins	FR1	--	Type K	T1 winding : 115.5, T1 bobbin: 113.4	no hazard, no broken

EN IEC 62368-1			
Clause	Requirement	Remark	Result

Annex M	TABLE: Batteries								N/A
The tests of Annex M are applicable only when appropriate battery data is not available									
Is it possible to install the battery in a reverse polarity position?..... :									
	Non-rechargeable batteries			Rechargeable batteries					
	Discharging		Un-intentional charging	Charging		Discharging		Reversed charging	
	Meas. current	Manuf. Specs.		Meas. current	Manuf. Specs.	Meas. current	Manuf. Specs.	Meas. current	Manuf. Specs.
Max. current during normal condition									
Max. current during fault condition									
Test results:								Verdict	
- Chemical leaks									
- Explosion of the battery									
- Emission of flame or expulsion of molten metal									
- Electric strength tests of equipment after completion of tests									
Supplementary information:									

Annex M.4	Table: Additional safeguards for equipment containing secondary lithium batteries					N/A
Battery/Cell No.	Test conditions	Measurements			Observation	
		U	I (A)	Temp (C)		
	Normal					
	Abnormal					
	Single fault –SC/OC					
	Normal					
	Abnormal					
	Single fault – SC/OC					
Supplementary Information:						
Battery identification	Charging at T_{lowest} (°C)	Observation	Charging at $T_{highest}$ (°C)	Observation		

EN IEC 62368-1					
Clause		Requirement		Remark	Result
Battery identification	Charging at T_{lowest} (°C)	Observation	Charging at $T_{highest}$ (°C)	Observation	
Supplementary Information:					

Annex Q.1	TABLE: Circuits intended for interconnection with building wiring (LPS)					P
Note: Measured UOC (V) with all load circuits disconnected:						
Output Circuit	Components	U _{oc} (V)	I _{sc} (A)		S (VA)	
			Meas.	Limit	Meas.	Limit
Output	Normal	5.20	1.15	8	5.5	100
Output	C4 SC	0	0	8	0	100
Supplementary Information:						
SC=Short circuit						

T.2, T.3, T.4, T.5	TABLE: Steady force test					P
Part/Location	Material	Thickness (mm)	Force (N)	Test Duration (sec)	Observation	
Top enclosure	Plastic	Min.1.5	100	5	No damaged	
Side enclosure	Plastic	Min.1.5	100	5	No damaged	
Bottom enclosure	Plastic	Min.1.5	100	5	No damaged	
Supplementary information:						

T.6, T.9	TABLE: Impact tests				N/A
Part/Location	Material	Thickness (mm)	Vertical distance (mm)	Observation	
Supplementary information:					

EN IEC 62368-1			
Clause	Requirement	Remark	Result

T.7	TABLE: Drop tests				P
Part/Location	Material	Thickness (mm)	Drop Height (mm)	Observation	
Top enclosure	Plastic	Min.1.5	1000	No damaged	
Side enclosure	Plastic	Min.1.5	1000	No damaged	
Bottom enclosure	Plastic	Min.1.5	1000	No damaged	
Supplementary information:					

T.8	TABLE: Stress relief test					P
Part/Location	Material	Thickness (mm)	Oven Temperature (°C)	Duration (h)	Observation	
Completed sample	Plastic enclosure (for all sources)	Min.1.5	70	7	No damaged, the hazardous live parts cannot be touched	
Supplementary information:						

EN IEC 62368-1			
Clause	Requirement	Remark	Result

-Appendix 1: For requirements of European group differences.

ATTACHMENT TO TEST REPORT EN IEC 62368-1 EUROPEAN GROUP DIFFERENCES AND NATIONAL DIFFERENCES (Audio/video, information and communication technology equipment Part 1: Safety requirements)	
Differences according to.....:	EN 62368-1:2020+A11:2020

	CENELEC COMMON MODIFICATIONS (EN)					--
	Clauses, subclauses, notes, tables, figures and annexes which are additional to those in EN IEC 62368-1:2014 are prefixed "Z".					--
CONTENT S	Add the following annexes: Annex ZA (normative) Normative references to international publications with their corresponding European publications Annex ZB (normative) Special national conditions Annex ZC (informative) A-deviations Annex ZD (informative) IEC and CENELEC code designations for flexible cords					N/A
	Delete all the "country" notes in the reference document (EN IEC 62368-1:2014) according to the following list:					N/A
	0.2.1	Note	1	Note 3	4.1.15	Note
	4.7.3	Note 1 and 2	5.2.2.2	Note	5.4.2.3.2.2 Table 13	Note c
	5.4.2.3.2.4	Note 1 and 3	5.4.2.5	Note 2	5.4.5.1	Note
	5.5.2.1	Note	5.5.6	Note	5.6.4.2.1	Note 2 and 3
	5.7.5	Note	5.7.6.1	Note 1 and 2	10.2.1 Table 39	Note 2, 3 and 4
	10.5.3	Note 2	10.6.2.1	Note 3	F.3.3.6	Note 3
	For special national conditions, see Annex ZB.					N/A
1	Add the following note: NOTE Z1 The use of certain substances in electrical and electronic equipment is restricted within the EU: see Directive 2011/65/EU.					N/A

EN IEC 62368-1			
Clause	Requirement	Remark	Result
4.Z1	<p>Add the following new subclause after 4.9:</p> <p>To protect against excessive current, short-circuits and earth faults in circuits connected to an a.c. mains, protective devices shall be included either as integral parts of the equipment or as parts of the building installation, subject to the following, a), b) and c):</p> <p>a) except as detailed in b) and c), protective devices necessary to comply with the requirements of B.3.1 and B.4 shall be included as parts of the equipment;</p> <p>b) for components in series with the mains input to the equipment such as the supply cord, appliance coupler, r.f.i. filter and switch, short-circuit and earth fault protection may be provided by protective devices in the building installation;</p> <p>c) it is permitted for pluggable equipment type B or permanently connected equipment, to rely on dedicated overcurrent and short-circuit protection in the building installation, provided that the means of protection, e.g. fuses or circuit breakers, is fully specified in the installation instructions.</p> <p>If reliance is placed on protection in the building installation, the installation instructions shall so state, except that for pluggable equipment type A the building installation shall be regarded as providing protection in accordance with the rating of the wall socket outlet.</p>		N/A
5.4.2.3.2.4	<p>Add the following to the end of this subclause:</p> <p>The requirement for interconnection with external circuit is in addition given in EN 50491-3:2009.</p>		N/A
10.2.1	<p>Add the following to c) and d) in table 39:</p> <p>For additional requirements, see 10.5.1.</p>		N/A

EN IEC 62368-1			
Clause	Requirement	Remark	Result
10.5.1	<p>Add the following after the first paragraph:</p> <p><i>For RS 1 compliance is checked by measurement under the following conditions:</i></p> <p><i>In addition to the normal operating conditions, all controls adjustable from the outside by hand, by any object such as a tool or a coin, and those internal adjustments or presets which are not locked in a reliable manner, are adjusted so as to give maximum radiation whilst maintaining an intelligible picture for 1 h, at the end of which the measurement is made.</i></p> <p>NOTE Z1 Soldered joints and paint lockings are examples of adequate locking.</p> <p><i>The dose-rate is determined by means of a radiation monitor with an effective area of 10 cm², at any point 10 cm from the outer surface of the apparatus.</i></p> <p><i>Moreover, the measurement shall be made under fault conditions causing an increase of the high-voltage, provided an intelligible picture is maintained for 1 h, at the end of which the measurement is made.</i></p> <p><i>For RS1, the dose-rate shall not exceed 1 µSv/h taking account of the background level.</i></p> <p>NOTE Z2 These values appear in Directive 96/29/Euratom of 13 May 1996.</p>		N/A
10.6.1	<p>Add the following paragraph to the end of the subclause:</p> <p>EN 71-1:2011, 4.20 and the related tests methods and measurement distances apply.</p>		N/A
10.Z1	<p>Add the following new subclause after 10.6.5.</p> <p>10.Z1 Non-ionizing radiation from radio frequencies in the range 0 to 300 GHz</p> <p>The amount of non-ionizing radiation is regulated by European Council Recommendation 1999/519/EC of 12 July 1999 on the limitation of exposure of the general public to electromagnetic fields (0 Hz to 300 GHz).</p> <p>For intentional radiators, ICNIRP guidelines should be taken into account for Limiting Exposure to Time-Varying Electric, Magnetic, and Electromagnetic Fields (up to 300 GHz). For hand-held and body-mounted devices, attention is drawn to EN 50360 and EN 50566</p>		N/A
G.7.1	<p>Add the following note:</p> <p>NOTE Z1 The harmonized code designations corresponding to the IEC cord types are given in Annex ZD.</p>		N/A

EN IEC 62368-1			
Clause	Requirement	Remark	Result
Bibliography	<p>Add the following standards:</p> <p>Add the following notes for the standards indicated:</p> <p>IEC 60130-9 NOTE Harmonized as EN 60130-9.</p> <p>IEC 60269-2 NOTE Harmonized as HD 60269-2.</p> <p>IEC 60309-1 NOTE Harmonized as EN 60309-1.</p> <p>IEC 60364 NOTE some parts harmonized in HD 384/HD 60364 series.</p> <p>IEC 60601-2-4 NOTE Harmonized as EN 60601-2-4.</p> <p>IEC 60664-5 NOTE Harmonized as EN 60664-5.</p> <p>IEC 61032:1997 NOTE Harmonized as EN 61032:1998 (not modified).</p> <p>IEC 61508-1 NOTE Harmonized as EN 61508-1.</p> <p>IEC 61558-2-1 NOTE Harmonized as EN 61558-2-1.</p> <p>IEC 61558-2-4 NOTE Harmonized as EN 61558-2-4.</p> <p>IEC 61558-2-6 NOTE Harmonized as EN 61558-2-6.</p> <p>IEC 61643-1 NOTE Harmonized as EN 61643-1.</p> <p>IEC 61643-21 NOTE Harmonized as EN 61643-21.</p> <p>IEC 61643-311 NOTE Harmonized as EN 61643-311.</p> <p>IEC 61643-321 NOTE Harmonized as EN 61643-321.</p> <p>IEC 61643-331 NOTE Harmonized as EN 61643-331.</p>		N/A
ZB	ANNEX ZB, SPECIAL NATIONAL CONDITIONS (EN)		N/A
4.1.15	<p>Denmark, Finland, Norway and Sweden</p> <p>To the end of the subclause the following is added:</p> <p>Class I pluggable equipment type A intended for connection to other equipment or a network shall, if safety relies on connection to reliable earthing or if surge suppressors are connected between the network terminals and accessible parts, have a marking stating that the equipment shall be connected to an earthed mains socket-outlet.</p> <p>The marking text in the applicable countries shall be as follows:</p> <p>In Denmark: "Apparatets stikprop skal tilsluttes en stikkontakt med jord som giver forbindelse til stikproppens jord."</p> <p>In Finland: "Laite on liitettävä suojakoskettimilla varustettuun pistorasiaan"</p> <p>In Norway: "Apparatet må tilkoples jordnet stikkontakt"</p> <p>In Sweden: "Apparaten skall anslutas till jordat uttag"</p>		N/A

EN IEC 62368-1			
Clause	Requirement	Remark	Result
4.7.3	United Kingdom To the end of the subclause the following is added: The torque test is performed using a socket-outlet complying with BS 1363, and the plug part shall be assessed to the relevant clauses of BS 1363. Also see Annex G.4.2 of this annex		N/A
5.2.2.2	Denmark After the 2nd paragraph add the following: A warning (marking safeguard) for high touch current is required if the touch current exceeds the limits of 3,5 mA a.c. or 10 mA d.c.		N/A

EN IEC 62368-1			
Clause	Requirement	Remark	Result
5.4.11.1 and Annex G	<p>Finland and Sweden</p> <p>To the end of the subclause the following is added:</p> <p>For separation of the telecommunication network from earth the following is applicable:</p> <p>If this insulation is solid, including insulation forming part of a component, it shall at least consist of either</p> <ul style="list-style-type: none"> • two layers of thin sheet material, each of which shall pass the electric strength test below, or • one layer having a distance through insulation of at least 0,4 mm, which shall pass the electric strength test below. <p>If this insulation forms part of a semiconductor component (e.g. an optocoupler), there is no distance through insulation requirement for the insulation consisting of an insulating compound completely filling the casing, so that clearances and creepage distances do not exist, if the component passes the electric strength test in accordance with the compliance clause below and in addition</p> <ul style="list-style-type: none"> • passes the tests and inspection criteria of 5.4.8 with an electric strength test of 1,5 kV multiplied by 1,6 (the electric strength test of 5.4.9 shall be performed using 1,5 kV), and • is subject to routine testing for electric strength during manufacturing, using a test voltage of 1,5kV. <p>It is permitted to bridge this insulation with a capacitor complying with EN 60384-14:2005, subclass Y2.</p> <p>A capacitor classified Y3 according to EN 60384-14:2005, may bridge this insulation under the following conditions:</p> <ul style="list-style-type: none"> • the insulation requirements are satisfied by having a capacitor classified Y3 as defined by EN 60384-14, which in addition to the Y3 testing, is tested with an impulse test of 2,5 kV defined in 5.4.11; • the additional testing shall be performed on all the test specimens as described in EN 60384-14; <p>the impulse test of 2,5 kV is to be performed before the endurance test in EN 60384-14, in the sequence of tests as described in EN 60384-14.</p>		N/A
5.5.2.1	<p>Norway</p> <p>After the 3rd paragraph the following is added:</p> <p>Due to the IT power system used, capacitors are required to be rated for the applicable line-to-line voltage (230 V).</p>		N/A

EN IEC 62368-1			
Clause	Requirement	Remark	Result
5.5.6	Finland, Norway and Sweden To the end of the subclause the following is added: Resistors used as basic safeguard or bridging basic insulation in class I pluggable equipment type A shall comply with G.10.1 and the test of G.10.2.		N/A
5.6.1	Denmark Add to the end of the subclause Due to many existing installations where the socket-outlets can be protected with fuses with higher rating than the rating of the socket-outlets the protection for pluggable equipment type A shall be an integral part of the equipment. <i>Justification:</i> In Denmark an existing 13 A socket outlet can be protected by a 20 A fuse.		N/A
5.6.4.2.1	Ireland and United Kingdom After the indent for pluggable equipment type A , the following is added: – the protective current rating is taken to be 13 A, this being the largest rating of fuse used in the mains plug.		N/A
5.6.5.1	To the second paragraph the following is added: The range of conductor sizes of flexible cords to be accepted by terminals for equipment with a rated current over 10 A and up to and including 13 A is: 1,25 mm ² to 1,5 mm ² in cross-sectional area.		N/A
5.7.5	Denmark To the end of the subclause the following is added: The installation instruction shall be affixed to the equipment if the protective conductor current exceeds the limits of 3,5 mA a.c. or 10 mA d.c.		N/A

EN IEC 62368-1			
Clause	Requirement	Remark	Result
5.7.6.1	<p>Norway and Sweden</p> <p>To the end of the subclause the following is added:</p> <p>The screen of the television distribution system is normally not earthed at the entrance of the building and there is normally no equipotential bonding system within the building. Therefore the protective earthing of the building installation needs to be isolated from the screen of a cable distribution system.</p> <p>It is however accepted to provide the insulation external to the equipment by an INTELLIGENT PULSE REPAIR or an interconnection cable with galvanic isolator, which may be provided by a retailer, for example.</p> <p>The user manual shall then have the following or similar information in Norwegian and Swedish language respectively, depending on in what country the equipment is intended to be used in:</p> <p>“Apparatus connected to the protective earthing of the building installation through the mains connection or through other apparatus with a connection to protective earthing – and to a television distribution system using coaxial cable, may in some circumstances create a fire hazard. Connection to a television distribution system therefore has to be provided through a device providing electrical isolation below a certain frequency range (galvanic isolator, see EN 60728-11)”</p> <p>NOTE In Norway, due to regulation for CATV-installations, and in Sweden, a galvanic isolator shall provide electrical insulation below 5 MHz. The insulation shall withstand a dielectric strength of 1,5 kV r.m.s., 50 Hz or 60 Hz, for 1 min.</p> <p>Translation to Norwegian (the Swedish text will also be accepted in Norway):</p> <p>“Apparater som er koplet til beskyttelsesjord via nettplugg og/eller via annet jordtilkoplet utstyr – og er tilkoplet et koaksialbasert kabel-TV nett, kan forårsake brannfare. For å unngå dette skal det ved tilkopling av apparater til kabel-TV nett installeres en galvanisk isolator mellom apparatet og kabel-TV nettet.”</p> <p>Translation to Swedish:</p> <p>”Apparater som är kopplad till skyddsjord via jordat vägguttag och/eller via annan utrustning och samtidigt är kopplad till kabel-TV nät kan i vissa fall medföra risk för brand. För att undvika detta skall vid anslutning av apparaten till kabel-TV nät galvanisk isolator finnas mellan apparaten och kabel-TV nätet.”</p>		N/A

EN IEC 62368-1			
Clause	Requirement	Remark	Result
5.7.6.2	<p>Denmark</p> <p>To the end of the subclause the following is added:</p> <p>The warning (marking safeguard) for high touch current is required if the touch current or the protective current exceed the limits of 3,5 mA .</p>		N/A
B.3.1 and B.4	<p>Ireland and United Kingdom</p> <p>The following is applicable:</p> <p>To protect against excessive currents and short-circuits in the primary circuit of direct plug-in equipment, tests according to Annexes B.3.1 and B.4 shall be conducted using an external miniature circuit breaker complying with EN 60898-1, Type B, rated 32A. If the equipment does not pass these tests, suitable protective devices shall be included as an integral part of the direct plug-in equipment, until the requirements of Annexes B.3.1 and B.4 are met</p>		N/A
G.4.2	<p>Denmark</p> <p>To the end of the subclause the following is added:</p> <p>Supply cords of single phase appliances having a rated current not exceeding 13 A shall be provided with a plug according to DS 60884-2-D1:2011.</p> <p>CLASS I EQUIPMENT provided with socket-outlets with earth contacts or which are intended to be used in locations where protection against indirect contact is required according to the wiring rules shall be provided with a plug in accordance with standard sheet DK 2-1a or DK 2-5a.</p> <p>If a single-phase equipment having a RATED CURRENT exceeding 13 A or if a poly-phase equipment is provided with a supply cord with a plug, this plug shall be in accordance with the standard sheets DK 6-1a in DS 60884-2-D1 or EN 60309-2.</p> <p>Mains socket outlets intended for providing power to Class II apparatus with a rated current of 2,5 A shall be in accordance DS 60884-2-D1:2011 standard sheet DKA 1-4a.</p> <p>Other current rating socket outlets shall be in compliance with Standard Sheet DKA 1-3a or DKA 1-1c.</p> <p>Mains socket-outlets with earth shall be in compliance with DS 60884-2-D1:2011 Standard Sheet DK 1-3a, DK 1-1c, DK1-1d, DK 1-5a or DK 1-7a</p> <p><i>Justification:</i> Heavy Current Regulations, Section 6c</p>		N/A

EN IEC 62368-1			
Clause	Requirement	Remark	Result
G.4.2	United Kingdom To the end of the subclause the following is added: The plug part of direct plug-in equipment shall be assessed to BS 1363: Part 1, 12.1, 12.2, 12.3, 12.9, 12.11, 12.12, 12.13, 12.16, and 12.17, except that the test of 12.17 is performed at not less than 125 °C. Where the metal earth pin is replaced by an Insulated Shutter Opening Device (ISOD), the requirements of clauses 22.2 and 23 also apply.		N/A
G.7.1	United Kingdom To the first paragraph the following is added: Equipment which is fitted with a flexible cable or cord and is designed to be connected to a mains socket conforming to BS 1363 by means of that flexible cable or cord shall be fitted with a 'standard plug' in accordance with the Plugs and Sockets etc (Safety) Regulations 1994, Statutory Instrument 1994 No. 1768, unless exempted by those regulations. NOTE "Standard plug" is defined in SI 1768:1994 and essentially means an approved plug conforming to BS 1363 or an approved conversion plug.		N/A
G.7.1	Ireland To the first paragraph the following is added: Apparatus which is fitted with a flexible cable or cord shall be provided with a plug in accordance with Statutory Instrument 525: 1997, "13 A Plugs and Conversion INTELLIGENT PULSE REPAIRs for Domestic Use Regulations: 1997. S.I. 525 provides for the recognition of a standard of another Member State which is equivalent to the relevant Irish Standard		N/A
G.7.2	Ireland and United Kingdom To the first paragraph the following is added: A power supply cord with a conductor of 1,25 mm ² is allowed for equipment which is rated over 10 A and up to and including 13 A.		N/A

EN IEC 62368-1			
Clause	Requirement	Remark	Result
ZC	ANNEX ZC, NATIONAL DEVIATIONS (EN)		N/A
10.5.2	<p>Germany</p> <p>The following requirement applies:</p> <p>For the operation of any cathode ray tube intended for the display of visual images operating at an acceleration voltage exceeding 40 kV, authorization is required, or application of type approval (Bauartzulassung) and marking.</p> <p><i>Justification:</i></p> <p>German ministerial decree against ionizing radiation (Röntgenverordnung), in force since 2002-07-01, implementing the European Directive 96/29/EURATOM.</p> <p>NOTE Contact address: Physikalisch-Technische Bundesanstalt, Bundesallee 100, D-38116 Braunschweig, Tel.: Int +49-531-592-6320, Internet: http://www.ptb.de</p>		N/A

Appendix 2: REAL PHOTOS

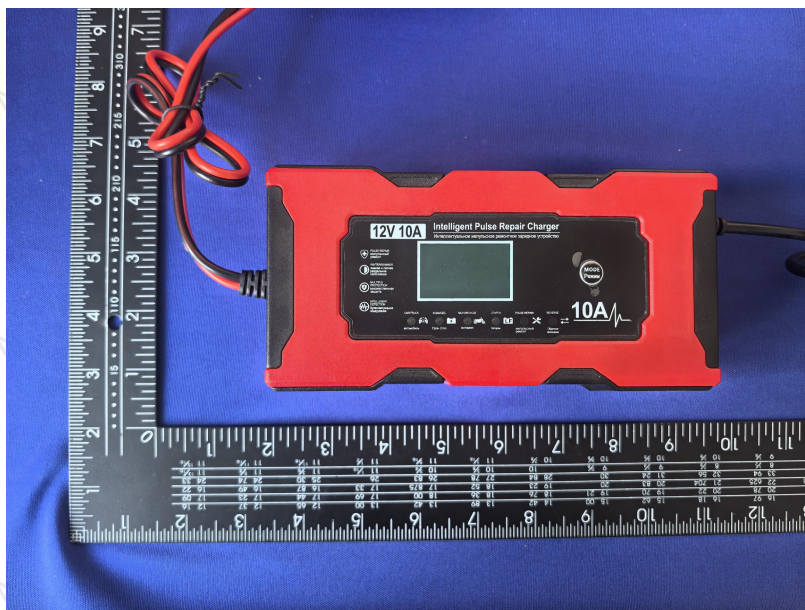


Figure-1



Figure-2

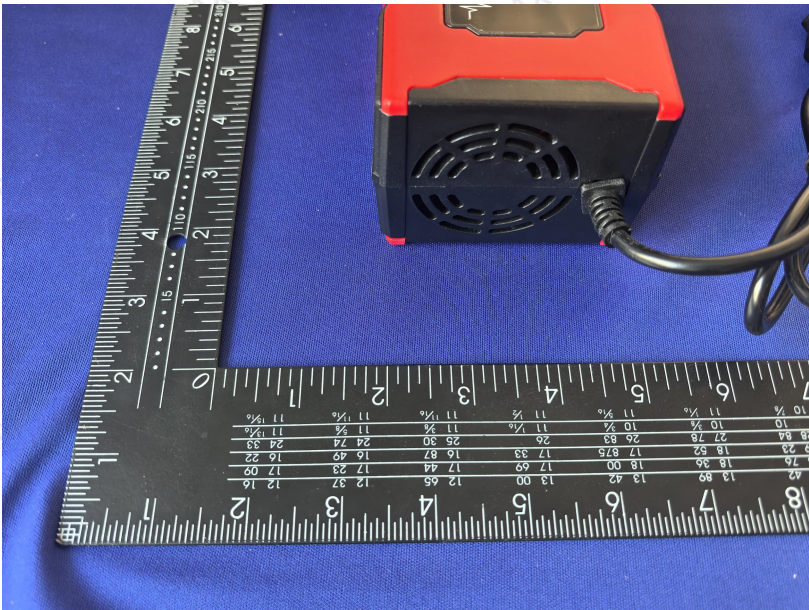


Figure-3

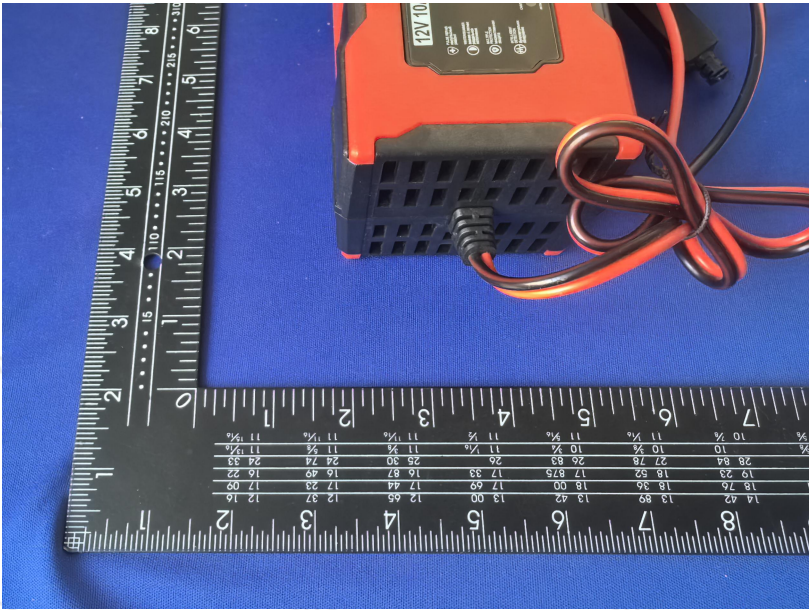


Figure-4

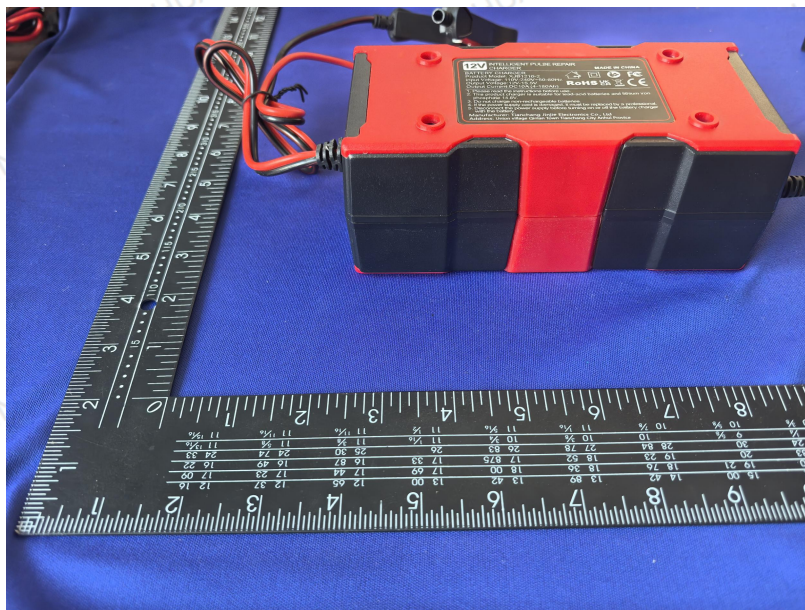


Figure-5

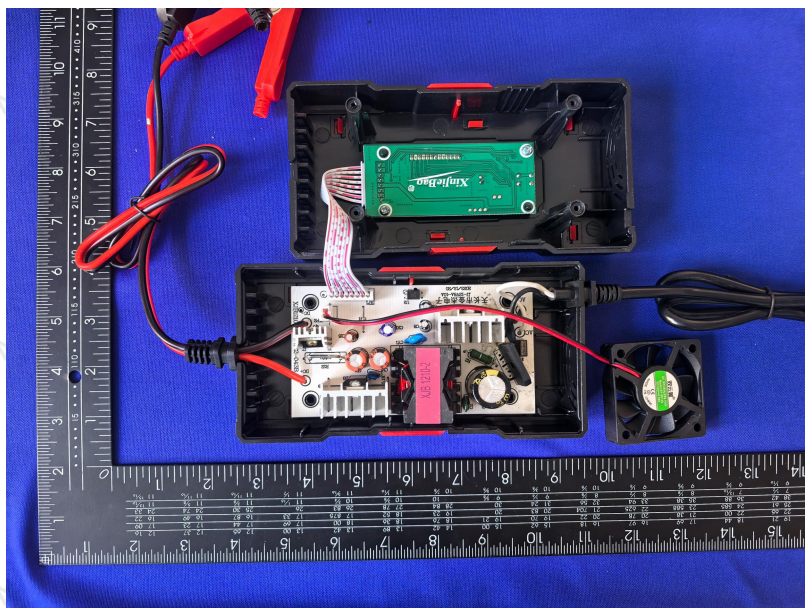


Figure-6

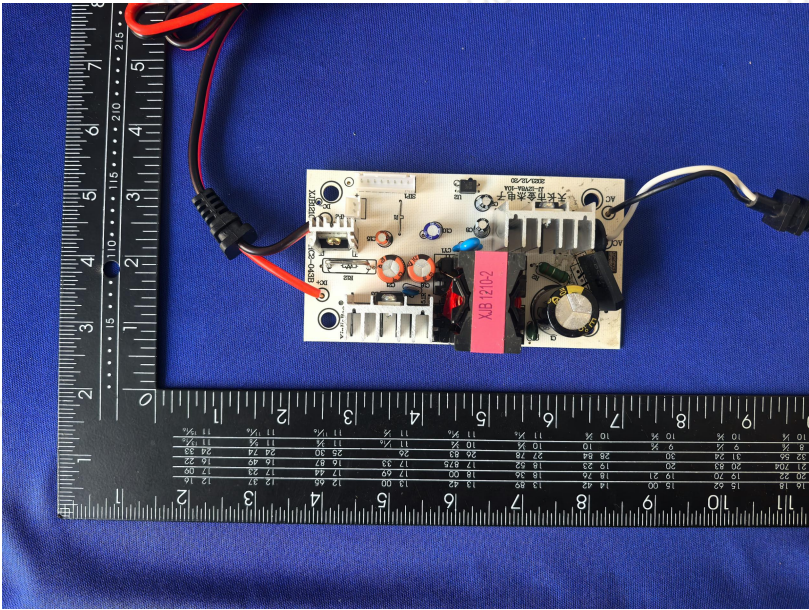


Figure-7

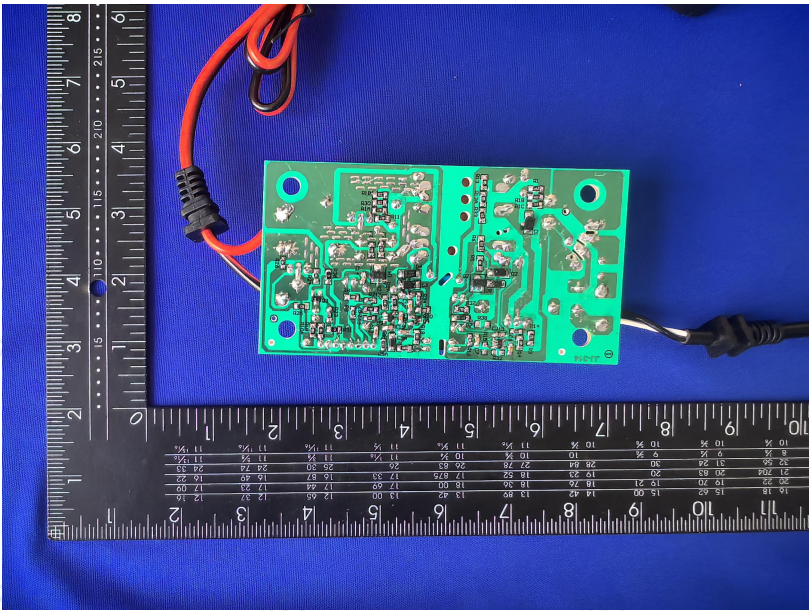


Figure-8

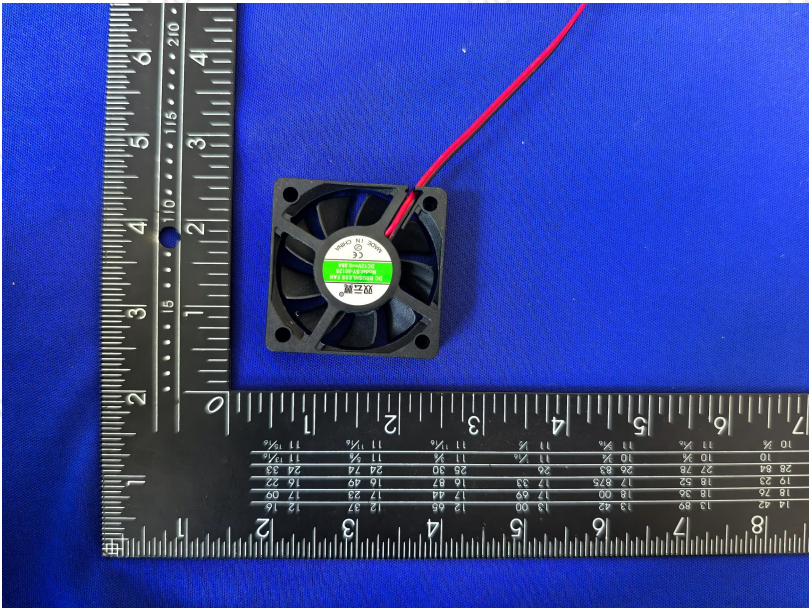


Figure-9

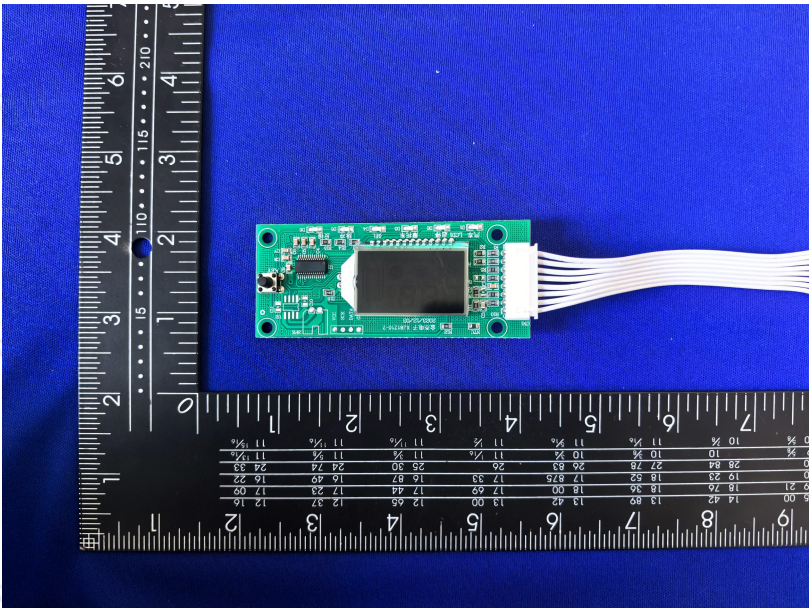


Figure-10

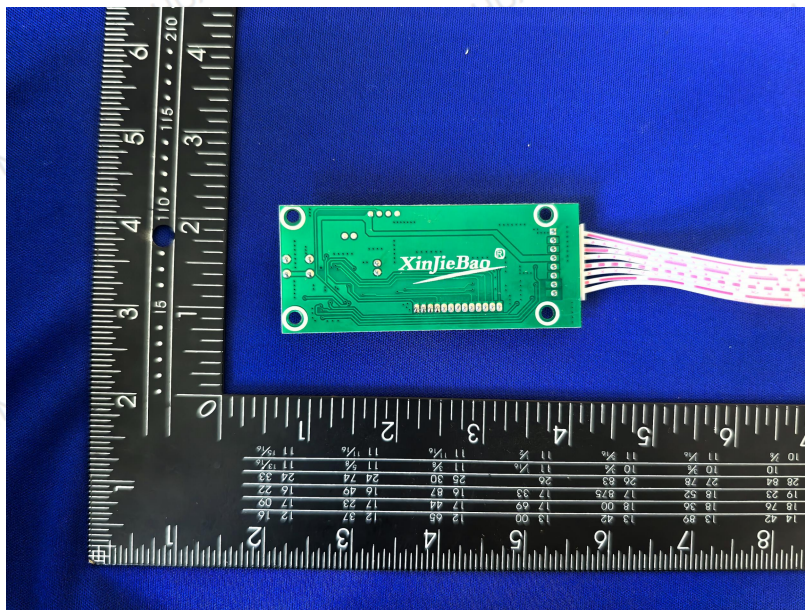


Figure-11

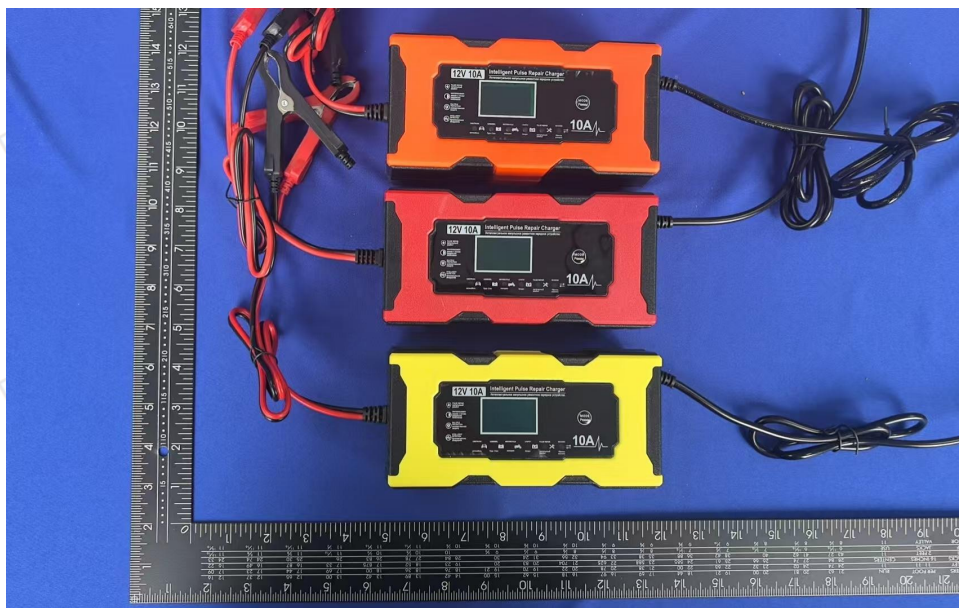


Figure-12

End of the report